

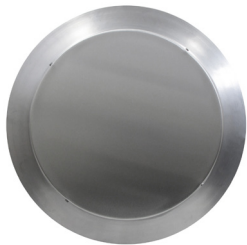


Aura Gravity Roof Ventilator with Curb Mount Flange

Model Number: AV-14-C6-CMF | 14" Diameter 6" Tall Collar



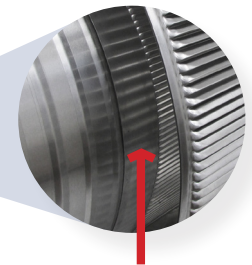
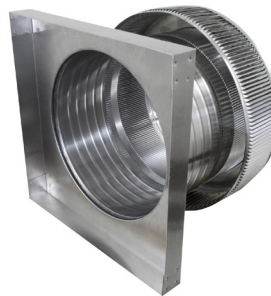
- Removes heat from the attic in the summer and moisture in the winter
- Louvers prevent rain, snow, insects and animals from entering
- Curb mount flange allows for easy access to the attic or duct below
- Exhausts air like a roof turbine but with no moving parts
- For low slope or flat roofs on top of roof curbs
- Constructed of durable rust-free aluminum
- Powder coating colors are available



Top View

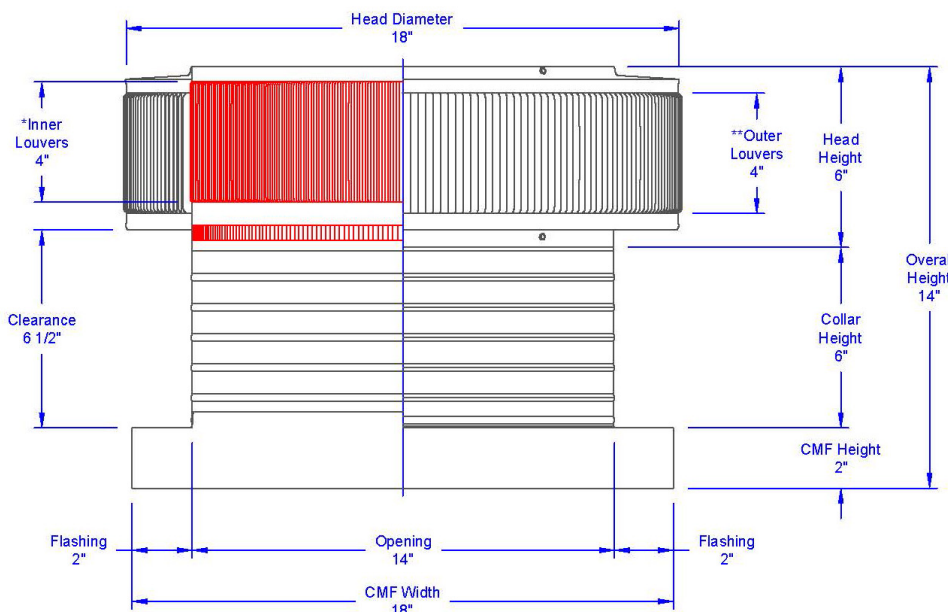


Bottom View



Inside Louvers

Dimensions & Specifications 144 Sq. in. NFA



Pitch Capacity				
Min.	Max. (Standard Vent)	Max. (Modified)		
0/12	6/12	12/12		
Net Free Vent Area				
(sq. inches)		(sq. feet)		
144		1		
Application per Sq. Foot				
(1/150)		(1/300)		
300		600		
CFM Performance Testing (using wind only)				
4 mph	5.2 mph	7.4 mph	9.8 mph	11 mph
178	200+	280	315	360