

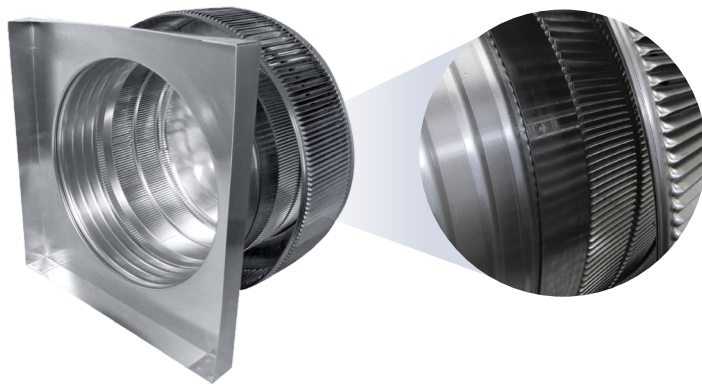


## Aura Gravity Roof Ventilator with Curb Mount Flange

Model Number: AV-16-C4-CMF | 16" Diameter 4" Tall Collar



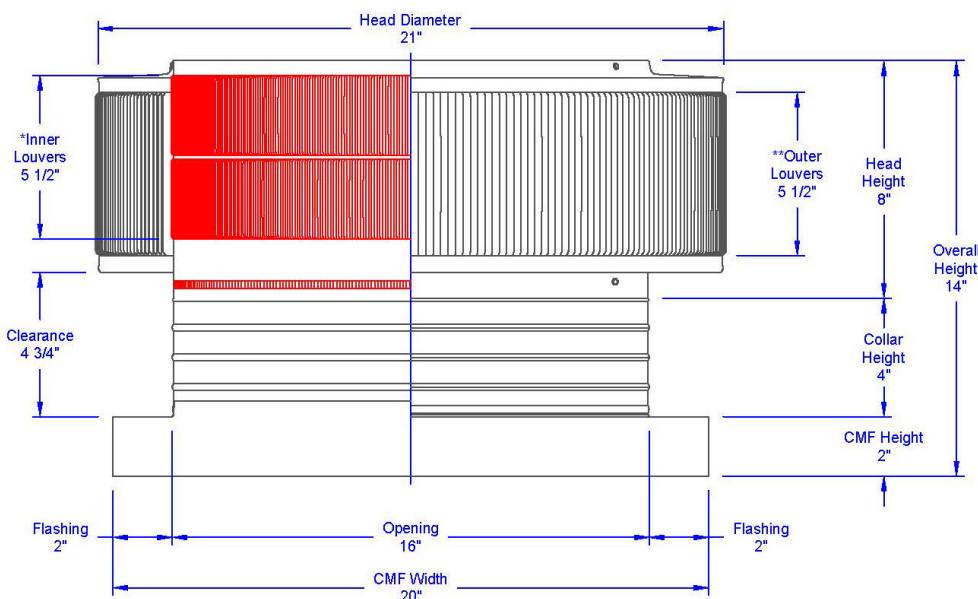
- Removes heat from the attic in the summer and moisture in the winter
- Louvers prevent rain, snow, insects and animals from entering
- Curb mount flange allows for easy access to the attic or duct below
- Exhausts air like a roof turbine but with no moving parts
- For low slope or flat roofs on top of roof curbs (sold separately)
- Constructed of durable rust-free aluminum
- Powder coating colors are available



\*Shown on 12" tall roof curb

### Dimensions & Specifications 200 Sq. in. NFA

Roof curbs available in 6", 12" and 18" tall



Pitch Capacity				
Min.	Max. (Standard Vent)	Max. (Modified)		
0/12	4/12	12/12		
Net Free Vent Area (sq. inches)		Net Free Vent Area (sq. feet)		
200		1.39		
Application per Sq. Foot				
(1/150)		(1/300)		
416		833		
CFM Performance Testing (using wind only)				
4 mph	5.2 mph	7.4 mph	9.8 mph	11 mph
246	276	387	435	497