

Installation Instructions for Model: AV-16-RF

Retro-Fit Vent Cap Designed to Fit Over an Existing Base or Vent Pipe

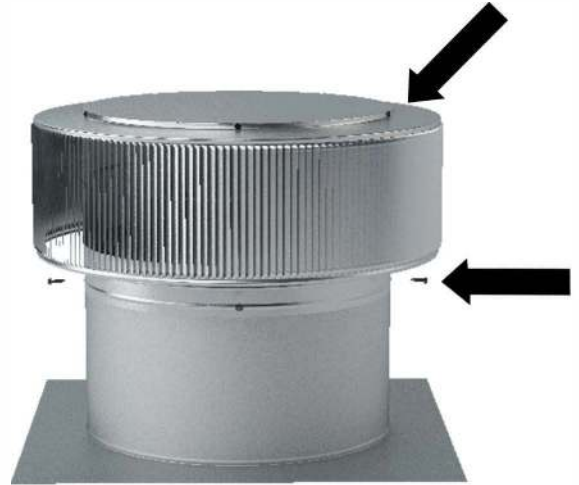
Step 1:

After you have removed the old head, slide the replacement head over the existing collar.



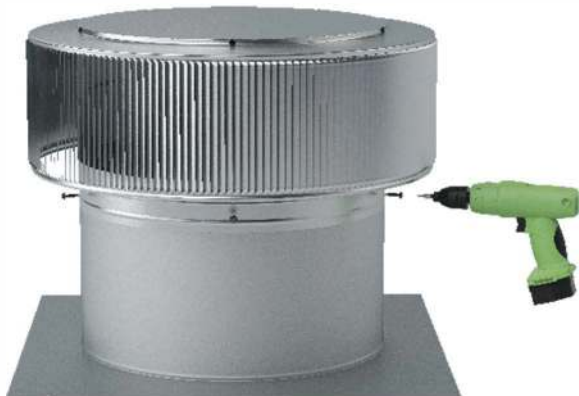
Step 2:

Observe the screws located on top of the vent. Use this as your pattern to attach the vent to the collar. Tolerance : 1/2"

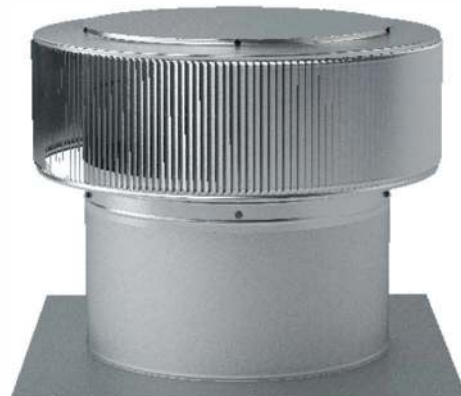


Step 3:

With the retro fit vent cap in place, use the provided #8 self-tapping screws (5 in total) to secure to the base.



Aura Vent Retro-fit installed on base.



Active Ventilation Products, Inc.

311 First Street, Newburgh, NY 12550-4857

800-ROOF VENT (766-3836) Ph: 845-565-7770 Fax: 845-562-8963

Website: roofvents.com Email: sales@roofvents.com

5778-6