



Aura Gravity Roof Ventilator with Curb Mount Flange

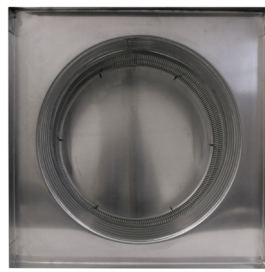
Model Number: AV-18-C6-CMF | 18" Diameter 6" Tall Collar



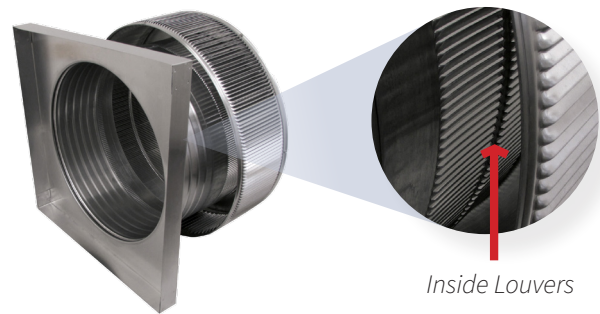
- Removes heat from the attic in the summer and moisture in the winter
- Louvers prevent rain, snow, insects and animals from entering
- Curb mount flange allows for easy access to the attic or duct below
- Exhausts air like a roof turbine but with no moving parts
- For low slope or flat roofs on top of roof curbs
- Constructed of durable rust-free aluminum
- Powder coating colors are available



Top View

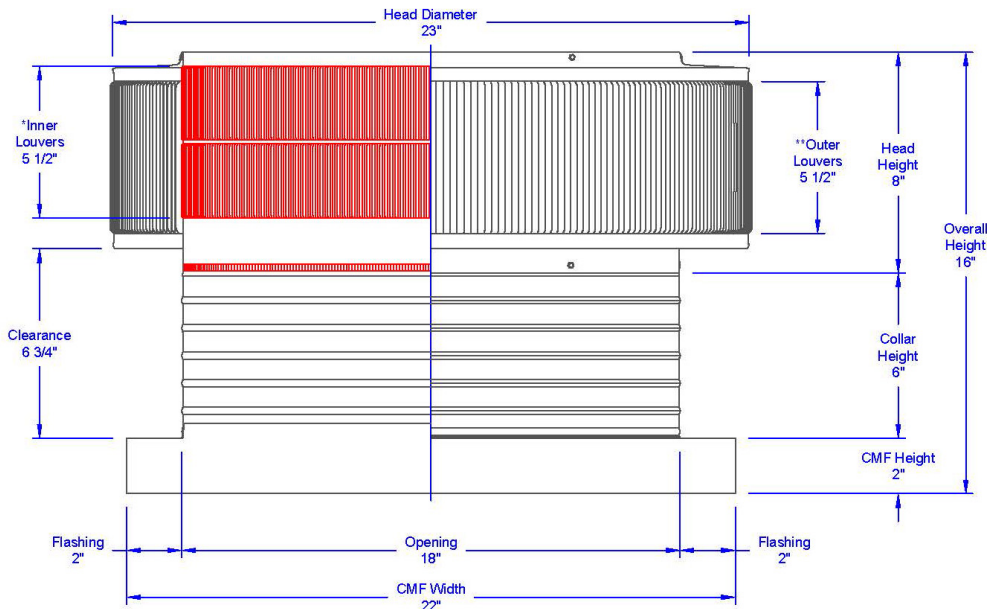


Bottom View



Inside Louvers

Dimensions & Specifications 254 Sq. in. NFA



| Pitch Capacity | | | | |
|--|-------------------------|----------------------------------|---------|--------|
| Min. | Max. (Standard Vent) | Max. (Modified) | | |
| 0/12 | 5/12 | 12/12 | | |
| Net Free Vent Area (sq. inches) | | Net Free Vent Area (sq. feet) | | |
| 254 | | 1.76 | | |
| Application per Sq. Foot | | | | |
| (1/150) | | (1/300) | | |
| 529 | | 1,058 | | |
| CFM Performance Testing (using wind only) | | | | |
| 4 mph | 5.2 mph | 7.4 mph | 9.8 mph | 11 mph |
| 313 | 352 | 493 | 554 | 634 |