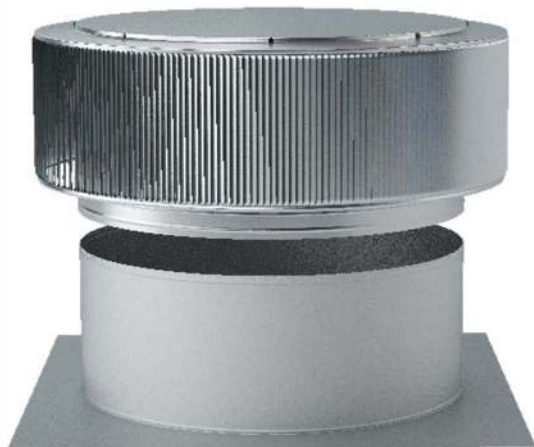


# Installation Instructions for Model: AV-24-RF

Retro-Fit Vent Cap Designed to Fit Over an Existing Base or Vent Pipe

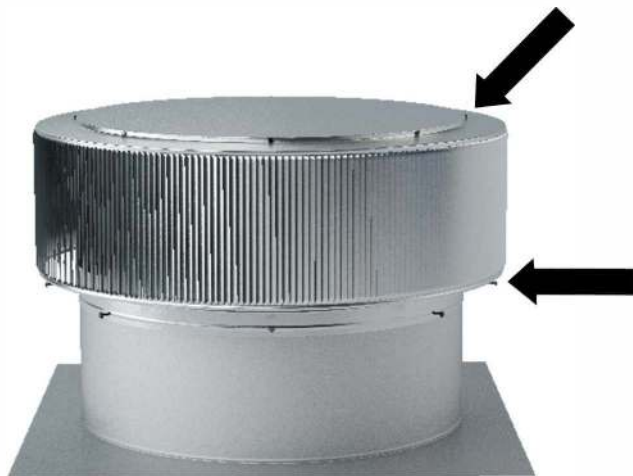
## Step 1:

After you have removed the old head, slide the replacement head over the existing collar.



## Step 2:

Observe the screws located on top of the vent. Use this as your pattern to attach the vent to the collar. Tolerance : 1/2"

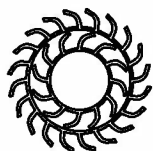


## Step 3:

With the retro fit vent cap in place, use the provided #8 self-tapping screws (8 in total) to secure to the base.



Aura Vent Retro-fit installed on base.



**Active Ventilation Products, Inc.**

311 First Street, Newburgh, NY 12550-4857

800-ROOF VENT (766-3836) Ph: 845-565-7770 Fax: 845-562-8963

Website: [roofvents.com](http://roofvents.com) Email: [sales@roofvents.com](mailto:sales@roofvents.com)

5778-6