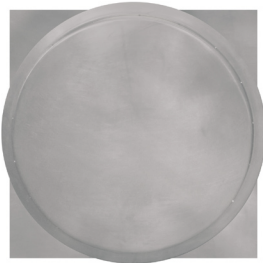




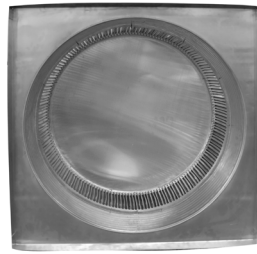
## Aura Gravity Roof Ventilator with Curb Mount Flange Model Number: AV-36-C12-CMF | 36" Diameter 12" Tall Collar



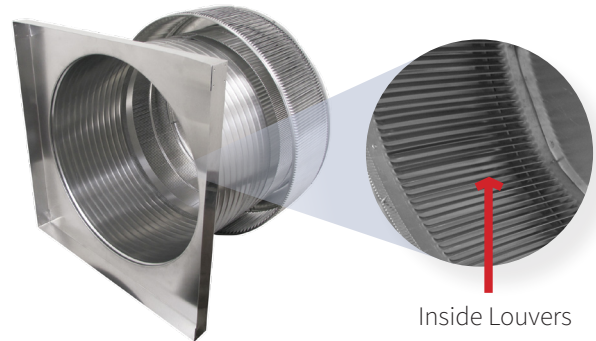
- Removes heat from the attic in the summer and moisture in the winter
- Louvers prevent rain, snow, insects and animals from entering
- Curb mount flange allows for easy access to the attic or duct below
- Exhausts air like a roof turbine but with no moving parts
- For low slope or flat roofs on top of roof curbs
- Constructed of durable rust-free aluminum
- Powder coating colors are available



Top View

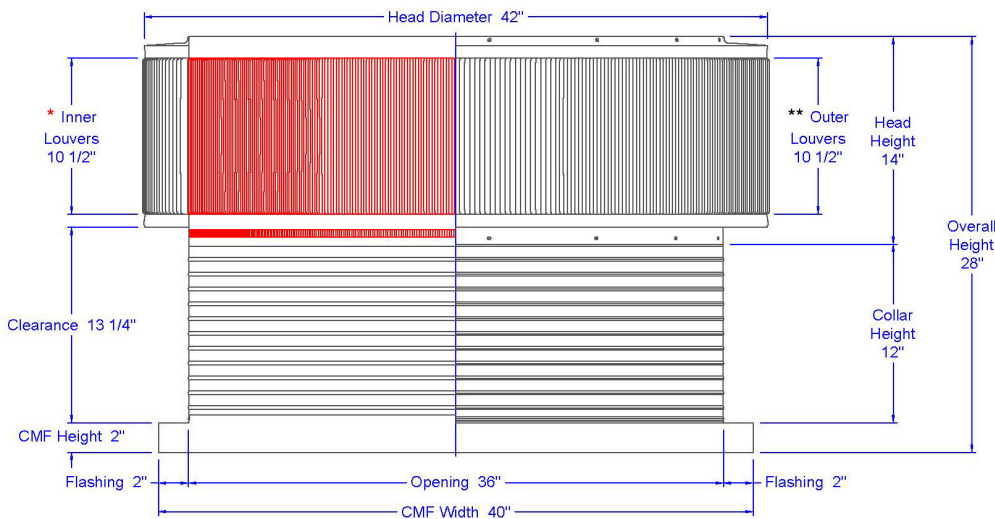


Bottom View



Inside Louvers

### Dimensions & Specifications 1,017 Sq. in. NFA



Pitch Capacity				
Min.	Max. (Standard Vent)		Max. (Modified)	
0/12	3/12		12/12	
Net Free Vent Area (sq. inches)			Net Free Vent Area (sq. feet)	
1,017			7.06	
Application per Sq. Foot				
(1/150)			(1/300)	
2,118			4,237	
CFM Performance Testing (using wind only)				
4 mph	5.2 mph	7.4 mph	9.8 mph	11 mph
1,256	1,287	1,973	2,221	2,538