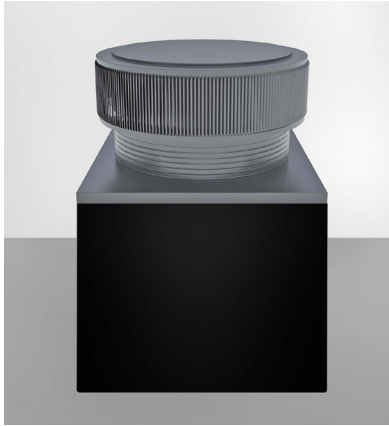


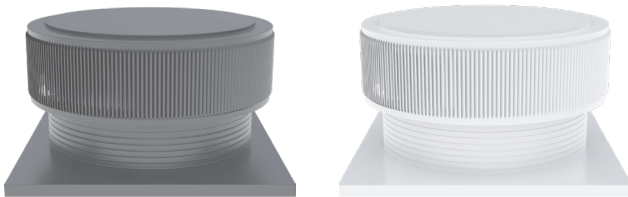


Aura Gravity Roof Ventilator with Curb Mount Flange

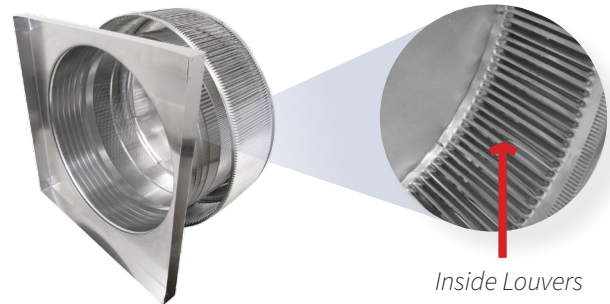
Model Number: AV-36-C6-CMF | 36" Diameter 6" Tall Collar



- Removes heat from the attic in the summer and moisture in the winter
- Louvers prevent rain, snow, insects and animals from entering
- Curb mount flange allows for easy access to the attic or duct below
- Exhausts air like a roof turbine but with no moving parts
- For low slope or flat roofs on top of roof curbs
- Constructed of durable rust-free aluminum
- Powder coating colors are available

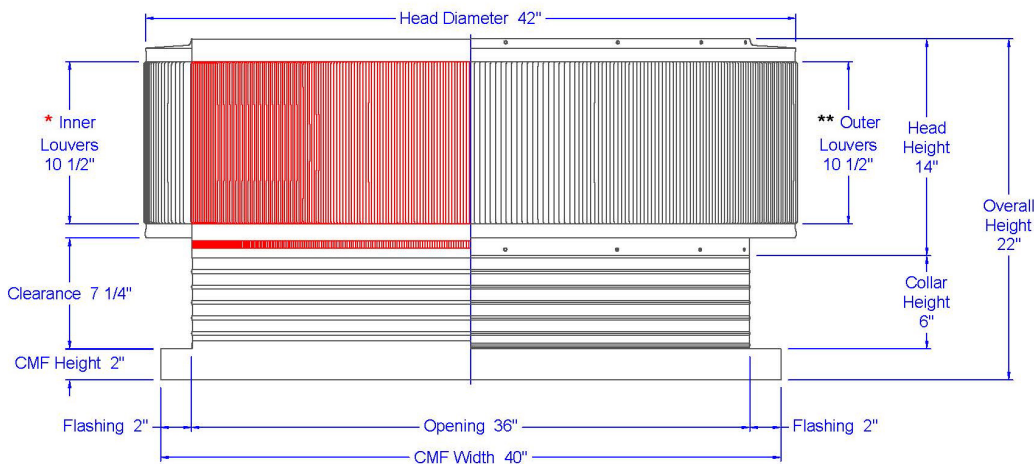


Shown in mill finish and white



Inside Louvers

Dimensions & Specifications 1,017 Sq. in. NFA



Pitch Capacity				
Min.	Max. (Standard Vent)	Max. (Modified)		
0/12	3/12	12/12		
Net Free Vent Area				
(sq. inches)		(sq. feet)		
1,017		7.06		
Application per Sq. Foot				
(1/150)		(1/300)		
2,118		4,237		
CFM Performance Testing (using wind only)				
4 mph	5.2 mph	7.4 mph	9.8 mph	11 mph
1,256	1,287	1,973	2,221	2,538