

Aura Gravity Roof Ventilator with Curb Mount Flange

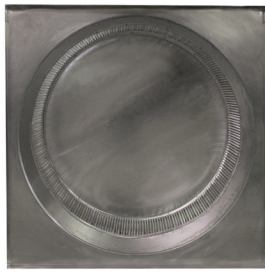
Model Number: AV-48-C6-CMF | 48" Diameter 6" Tall Collar



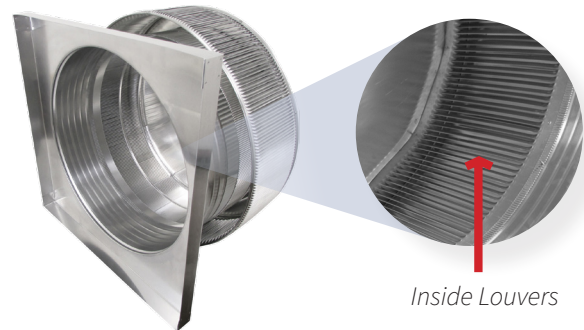
- Removes heat from the attic in the summer and moisture in the winter
- Louvers prevent rain, snow, insects and animals from entering
- Curb mount flange allows for easy access to the attic or duct below
- Exhausts air like a roof turbine but with no moving parts
- For low slope or flat roofs on top of roof curbs
- Constructed of durable rust-free aluminum
- Powder coating colors are available



Top View

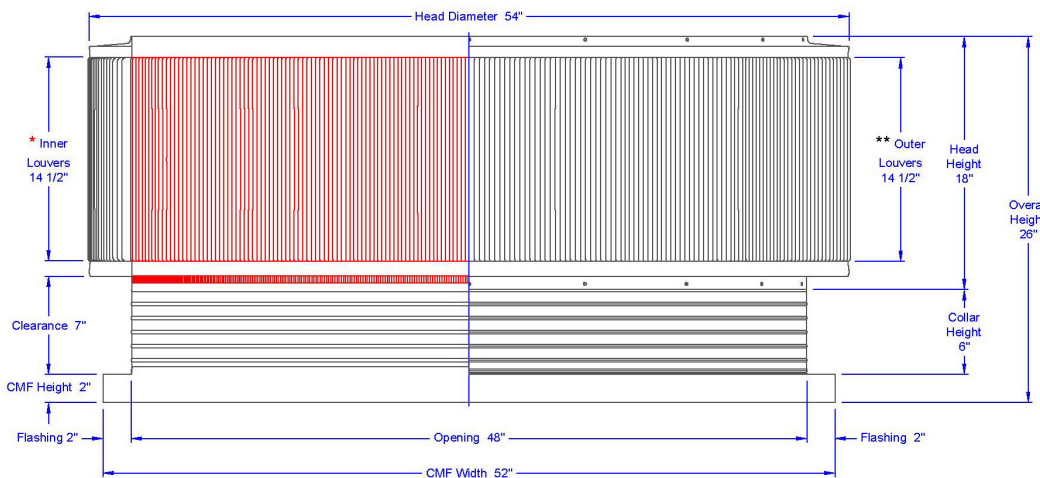


Bottom View



Inside Louvers

Dimensions & Specifications 1,808 Sq. in. NFA



Pitch Capacity				
Min.	Max. (Standard Vent)		Max. (Modified)	
0/12	3/12		12/12	
Net Free Vent Area				
(sq. inches)		(sq. feet)		
1,808		12.56		
Application per Sq. Foot				
(1/150)		(1/300)		
3,766		7,533		
CFM Performance Testing (using wind only)				
4 mph	5.2 mph	7.4 mph	9.8 mph	11 mph
2,825	2,896	4,440	4,997	5,711