

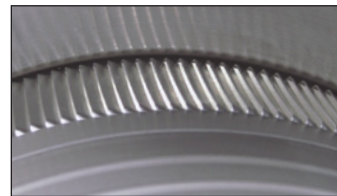


## Keepa Roof Vent with a Curb Mount Flange

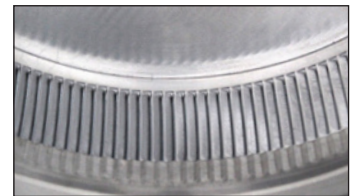
### Model: KV-12-CMF

**Keepa Vent 12" diameter with Curb Mount Flange**  
*designed for a roof curb with a Maximum OD of 15 7/8" X 15 7/8"*

- Used for venting attics, plenums and HVAC ducts
- Engineered to prevent rain, snow, insects and animals from entering
- Designed to be installed onto a roof curb
- Engineered to withstand wind pressures over 200 mph
- Vent head is removable for easy maintenance
- Constructed of durable rust-free aluminum
- Available in many powder coated colors

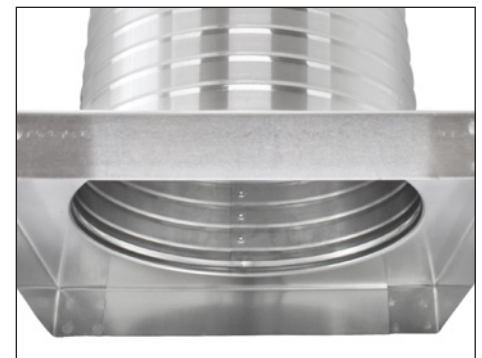
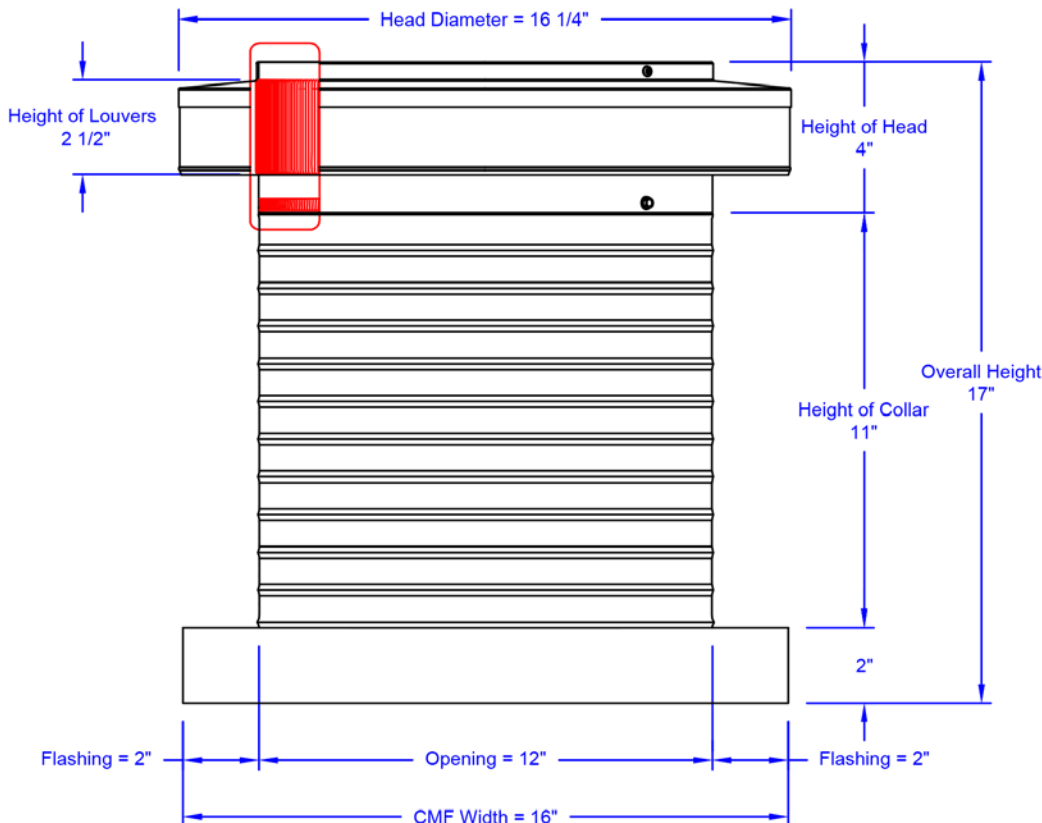


Close up of louvers - Outside



Close up of louvers - Inside

### Dimensions & Specifications



Bottom view of Curb Mount Flange

Pitch Capacity	
Min.: 0/12	Max.: 12/12
Net Free Vent Area	
113 sq. inches	0.78 sq. feet
Application per Sq. Foot	
235 (1/150)	470 (1/300)
Weight = 4 lbs	