

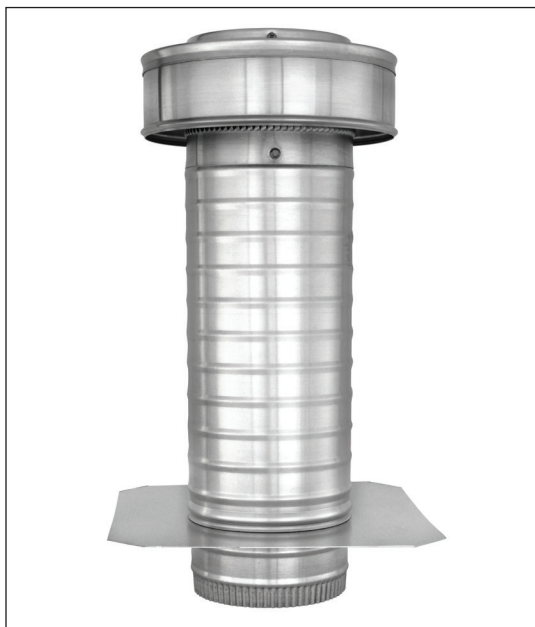


Keepa Roof Jack Vent Cap

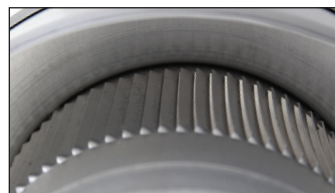
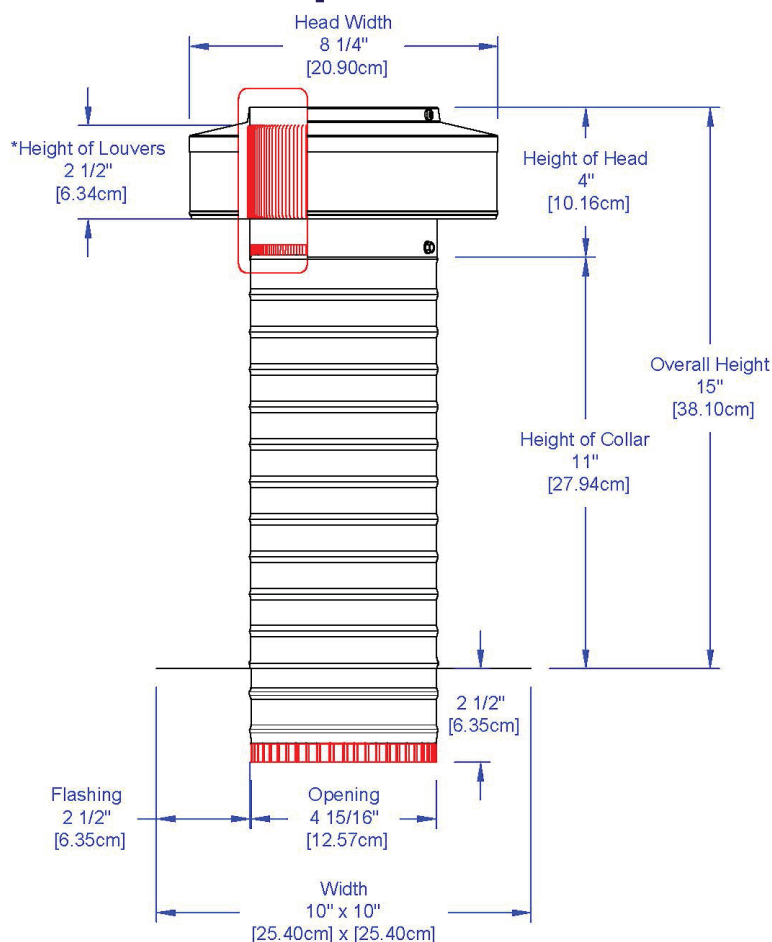
Model: KV-5-TP

Keepa Vent 5" diameter & Tail Pipe Adaptor for 5" flex duct or rigid pipe

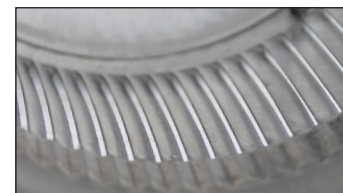
- Used for venting bathroom & kitchen fans or other HVAC duct applications
- Engineered to prevent rain, snow, insects and animals from entering
- Engineered to withstand wind pressures over 200 mph
- Vent head is removable for easy maintenance
- Constructed of durable rust-free aluminum
- Available 5 powder coat colors and mill finish aluminum (Shown in Mill Finish)



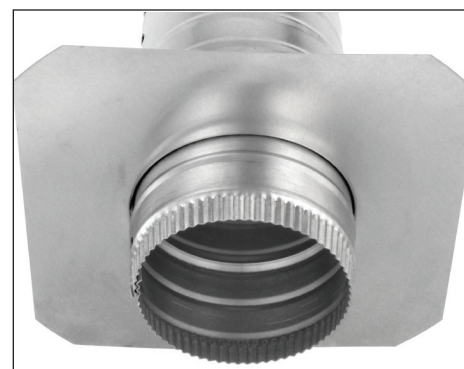
Dimensions & Specifications



Close up of louvers - Outside



Close up of louvers - Inside



Bottom view of Curb Mount Flange

Pitch Capacity	
Min.: 0/12	Max.: 12/12
Exhaust airflow at SP .25	
180 CFM	
Weight = 1.5 lbs	