



Keepa Vent with a Curb Mount Flange & Tail Pipe, a Roof Jack Vent for Roof Curbs

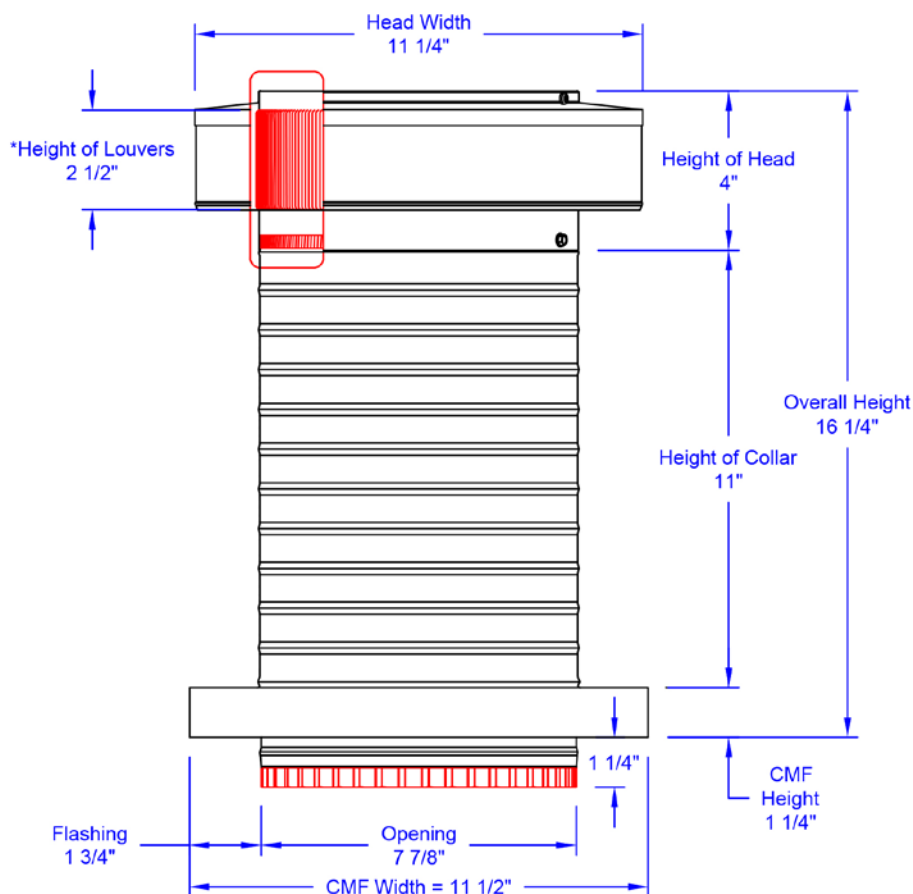
Model: KV-8-CMF-TP

**Keepa Vent 8" diameter with CMF
& Tail Pipe Adaptor for 8" flex duct or rigid pipe**
designed for a roof curb with a Maximum OD of 11 3/8" X 11 3/8"

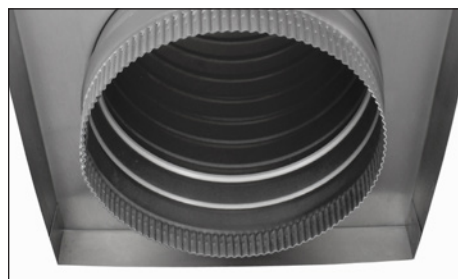
- Used for venting bathroom & kitchen fans or other HVAC duct applications using 8" flex duct or round metal duct pipe
- Tail pipe adaptor makes for easy attachment to duct work
- Designed to be installed onto a roof curb
- Engineered to prevent rain, snow, insects and animals from entering
- Engineered to withstand wind pressures over 200 mph
- Vent head is removable for easy maintenance
- Constructed of durable rust-free aluminum
- Available in many powder coated colors



Dimensions & Specifications



Close up of bug resistant louvers.



Close up of tail pipe adapter extension

Pitch Capacity

Min.: 0/12

Max.: 12/12

Weight = 2 lbs