

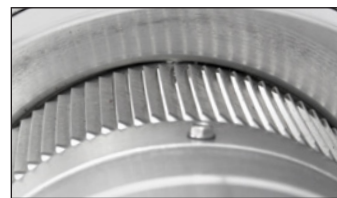


## Keepa Roof Vent with a Curb Mount Flange

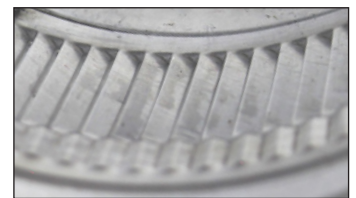
### Model: KV-6-CMF

**Keepa Vent 6" diameter with Curb Mount Flange**  
*designed for a roof curb with a Maximum OD of 9 3/8" X 9 3/8"*

- Used for venting attics, plenums and HVAC ducts
- Engineered to prevent rain, snow, insects and animals from entering
- Designed to be installed onto a roof curb
- Engineered to withstand wind pressures over 200 mph
- Vent head is removable for easy maintenance
- Constructed of durable rust-free aluminum
- Available in many powder coated colors

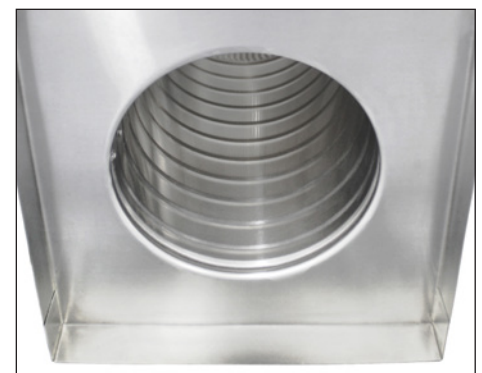
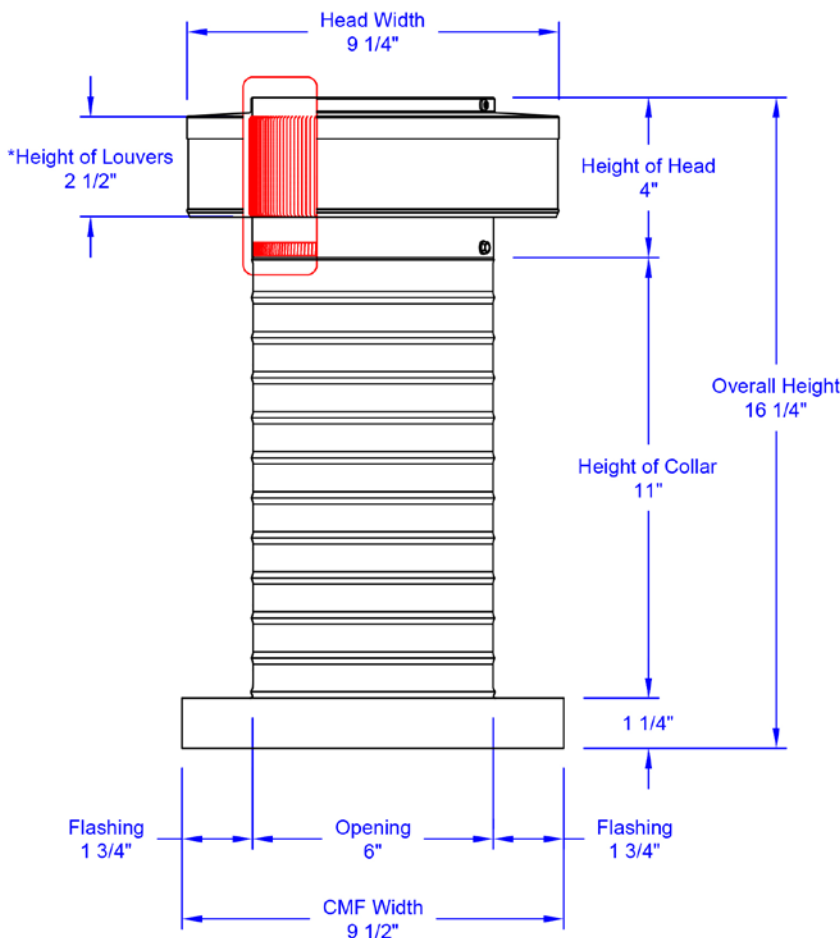


Close up of louvers - Outside



Close up of louvers - Inside

### Dimensions & Specifications



Bottom view of Curb Mount Flange

| Pitch Capacity           |               |
|--------------------------|---------------|
| Min.: 0/12               | Max.: 12/12   |
| Net Free Vent Area       |               |
| 28 sq. inches            | 0.19 sq. feet |
| Application per Sq. Foot |               |
| 58 (1/150)               | 116 (1/300)   |
| Weight = 2 lbs           |               |