

Keepa Roof Jack Vent Cap

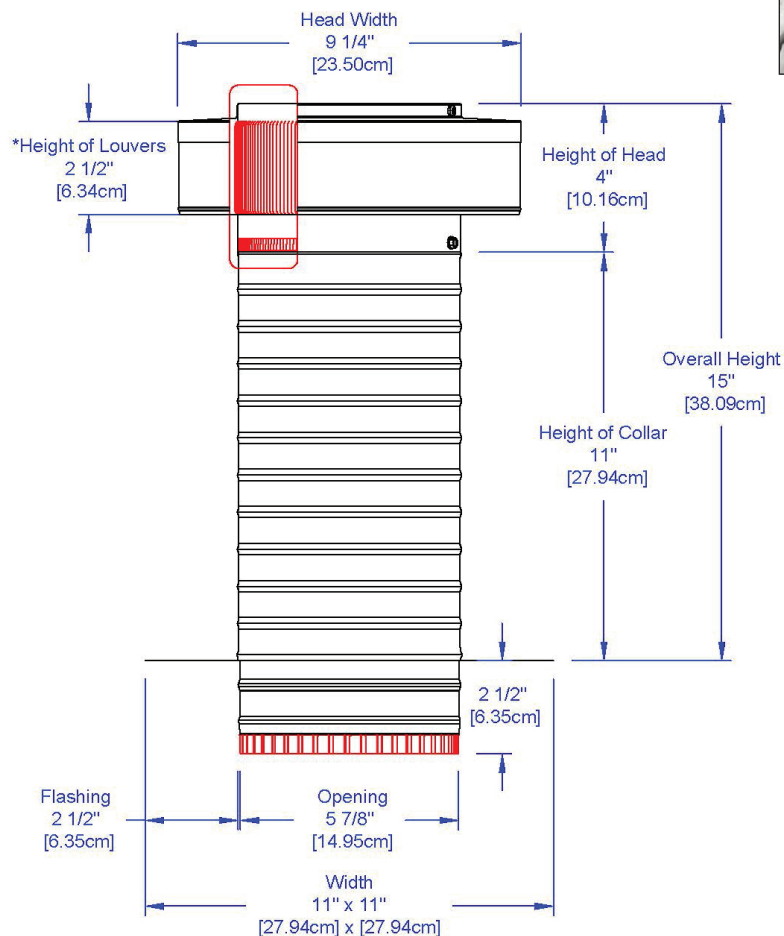
Model: KV-6-TP

Keepa Vent 6" diameter & Tail Pipe Adaptor for 6" flex duct or rigid pipe

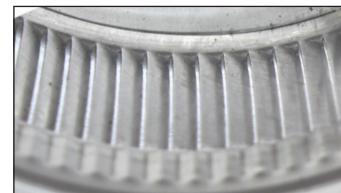
- Used for venting bathroom & kitchen fans or other HVAC duct applications
- Engineered to prevent rain, snow, insects and animals from entering
- Engineered to withstand wind pressures over 200 mph
- Vent head is removable for easy maintenance
- Constructed of durable rust-free aluminum
- Available 5 powder coat colors and mill finish aluminum (Shown in Mill Finish)



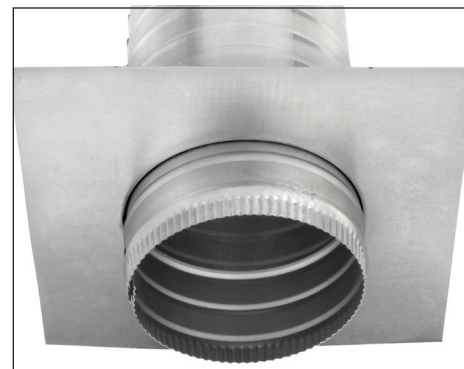
Dimensions & Specifications



Close up of louvers - Outside



Close up of louvers - Inside



Bottom view of Curb Mount Flange

Pitch Capacity

Min.: 0/12

Max.: 12/12

Exhaust airflow at SP .25

200 CFM

Weight = 2 lbs