



## Keepa Attic Vent

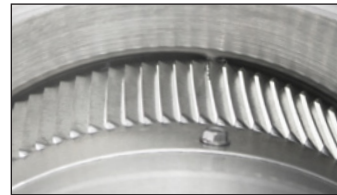
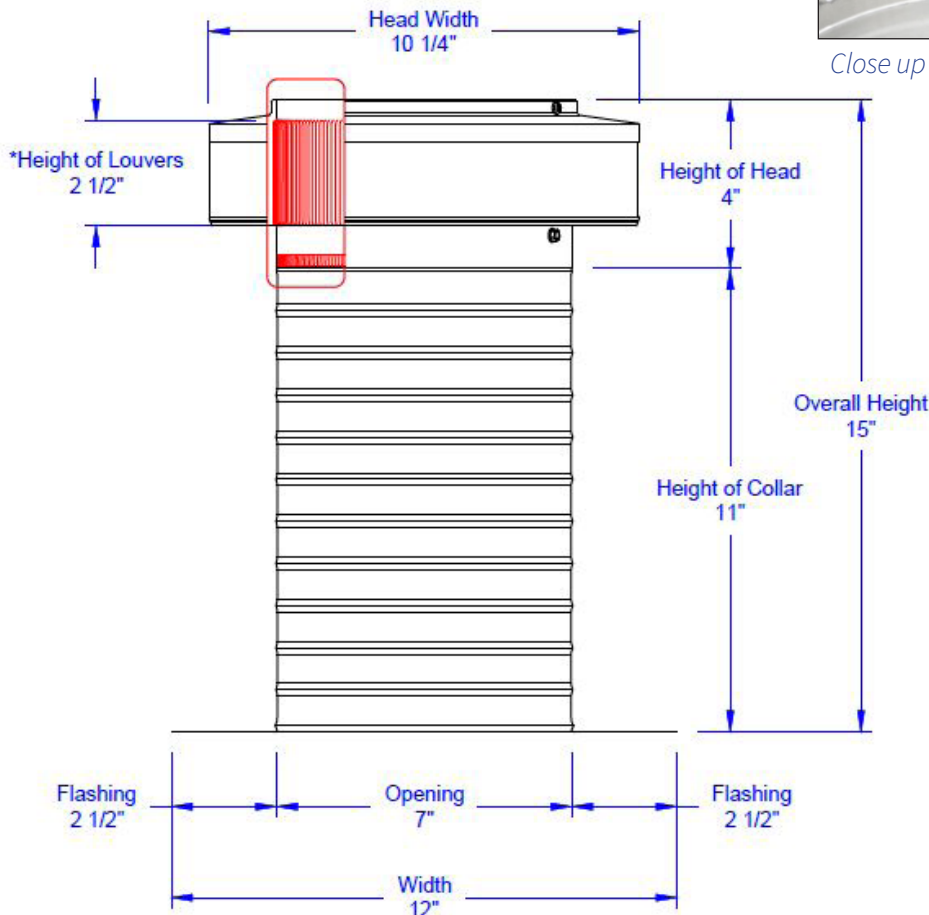
### Model: KV-7

#### Keepa Vent 7" diameter

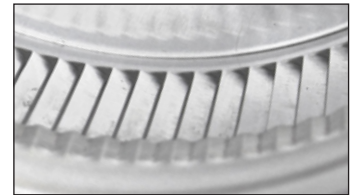


- Used for venting attics, plenums and HVAC ducts
- Engineered to prevent rain, snow, insects and animals from entering
- Removes excess heat in the summer and moisture in the winter
- For ventilating flat or low slope roofs
- Engineered to withstand wind pressures over 200 mph
- Vent head is removable for easy maintenance
- Constructed of durable rust-free aluminum
- Available in over 40 powder coat colors

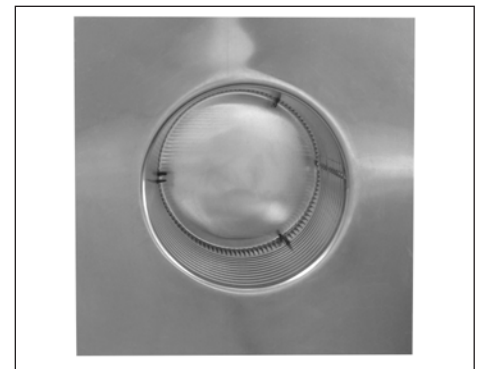
### Dimensions & Specifications



Close up of louvers - Outside



Close up of louvers - Inside



Bottom view of Curb Mount Flange

Pitch Capacity	
Min.: 0/12	Max.: 12/12
Net Free Vent Area	
38 sq. inches	0.26 sq. feet
Application per Sq. Foot	
79 (1/150)	158 (1/300)
Weight = 1.65 lbs	