



Keepa Attic Vent

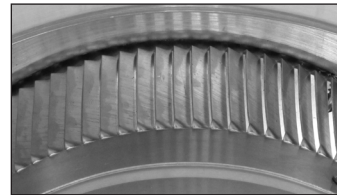
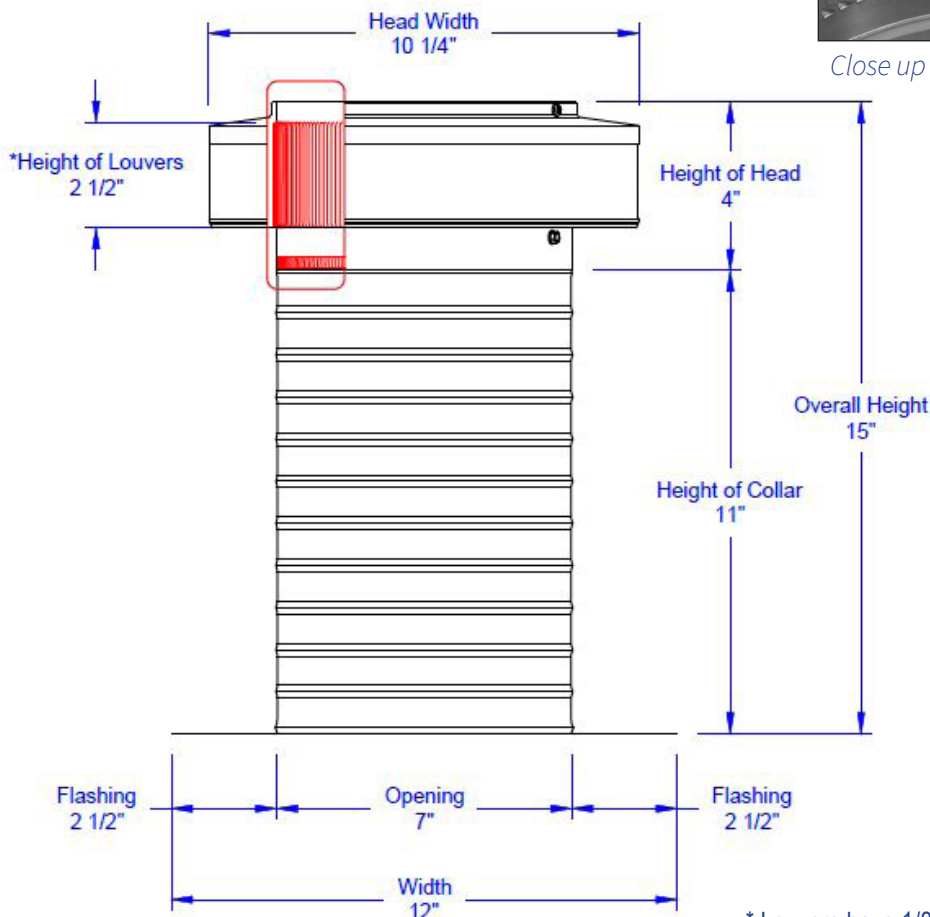
Model: KV-7

Keepa Vent 7" diameter



- Removes excess heat in the summer and moisture in the winter
- Engineered to prevent rain, snow, insects and animals from entering
- For ventilating flat or low slope roofs
- Engineered to withstand wind pressures over 200 mph
- Removable top for easy roof membrane installation
- Constructed of durable rust-free aluminum
- Use as air intake or exhaust (two-way vent)
- Available in over 40 powder coat colors, or unpainted

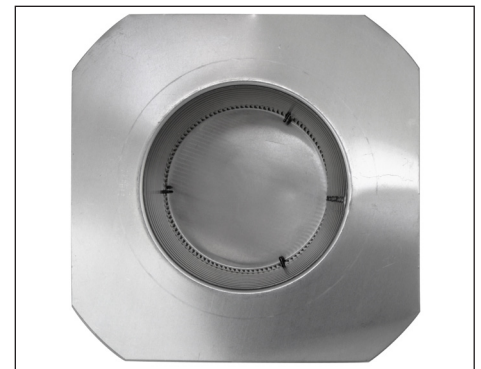
Dimensions & Specifications



Close up of louvers - Outside



Close up of louvers - Inside



Bottom view of flat base

Pitch Capacity	
Min.: 0/12	Max.: 12/12
Net Free Vent Area	
38 sq. inches	0.26 sq. feet
Application per Sq. Foot	
79 (1/150)	158 (1/300)
Weight = 1.65 lbs	

* Louvers have 1/8" opening