

Keepa Roof Jack Vent Cap

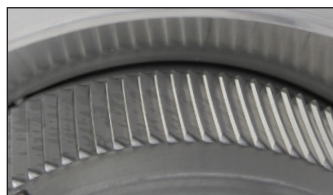
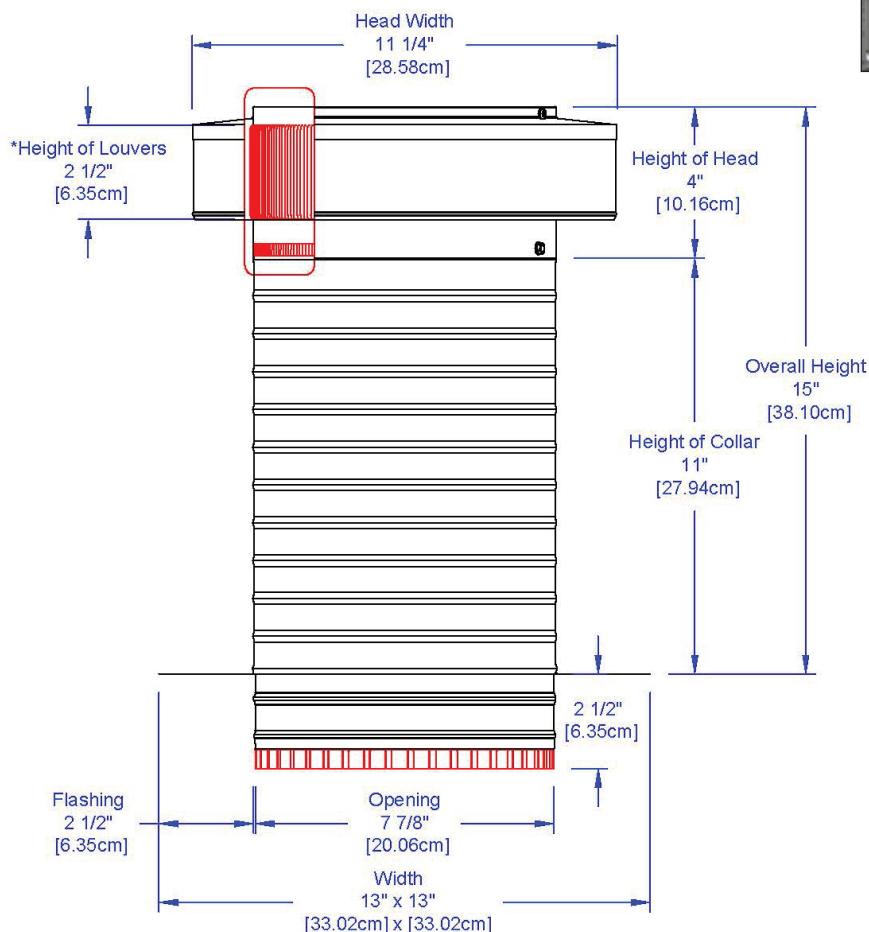
Model: KV-8-TP

Keepa Vent 8" diameter & Tail Pipe Adaptor for 8" flex duct or rigid pipe

- Used for venting bathroom & kitchen fans or other HVAC duct applications
- Engineered to prevent rain, snow, insects and animals from entering
- Engineered to withstand wind pressures over 200 mph
- Vent head is removable for easy maintenance
- Constructed of durable rust-free aluminum
- Available 5 powder coat colors and mill finish aluminum (Shown in Mill Finish)



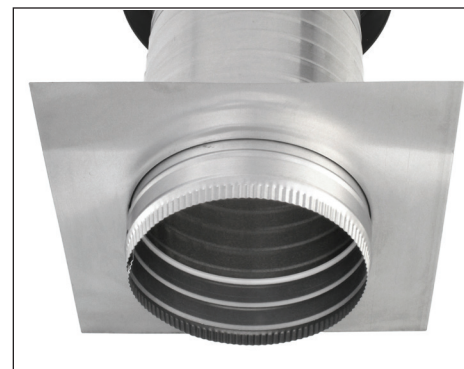
Dimensions & Specifications



Close up of louvers - Outside



Close up of louvers - Inside



Bottom view of Curb Mount Flange

Pitch Capacity

Min.: 0/12

Max.: 12/12

Exhaust airflow at SP .25

275 CFM

Weight = 3 lbs