

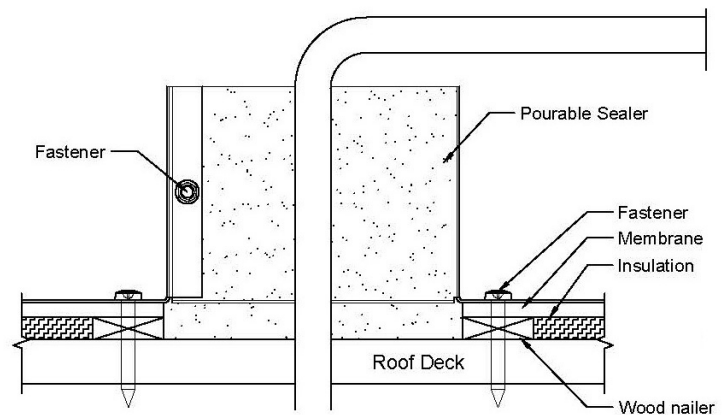


## TPO Clad Steel Pitch Pan - Pitch Pocket for TPO Roofs

### Model: PP-TPO-6x6-H5

#### Pitch Pocket with a 6" x 6" ID by 5" Tall

- A Pitch Pocket is a flashing used on flat membrane roofs to make a roof penetration waterproof.
- The pitch pan is constructed with super strong clad metal, combining steel and a TPO coating.
- TPO coated steel offers superior adherence to TPO roofs when hot-air welding tools are used.
- Clad metal saves the roofer time by eliminating the need to prep bare metal.
- Adheres to both TPO wraps and boots for a water tight installation.
- Multiple sizes available to fit a variety of pipe, HVAC, and conduit penetrations on commercial flat roofs.



### Dimensions & Specifications

