

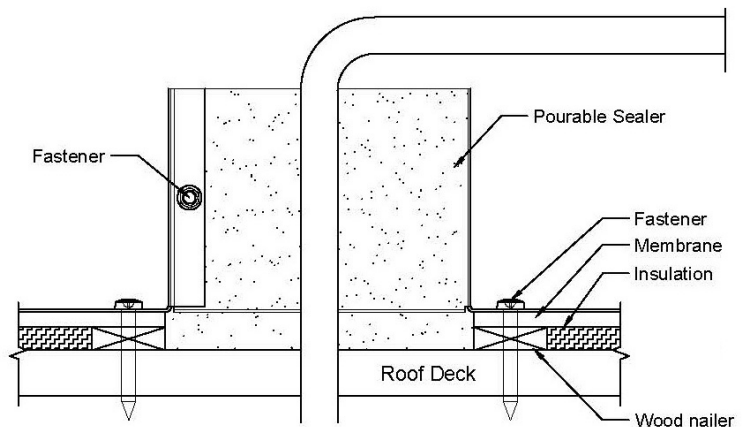


TPO Clad Steel Pitch Pan - Pitch Pocket for TPO Roofs

Model: PP-TPO-8x8-H3

Pitch Pocket with a 8" x 8" ID by 3" Tall

- A Pitch Pocket is a flashing used on flat membrane roofs to make a roof penetration waterproof.
- The pitch pan is constructed with super strong clad metal, combining steel and a TPO coating.
- TPO coated steel offers superior adherence to TPO roofs when hot-air welding tools are used.
- Clad metal saves the roofer time by eliminating the need to prep bare metal.
- Adheres to both TPO wraps and boots for a water tight installation.
- Multiple sizes available to fit a variety of pipe, HVAC, and conduit penetrations on commercial flat roofs.



Dimensions & Specifications

