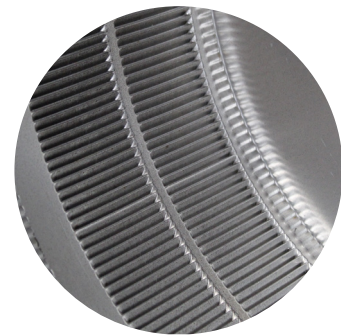
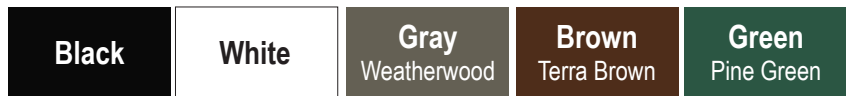




Pop Vent Roof Louver Exhaust Model: PV-18-C2 | 18" Diameter with 2" Tall Collar

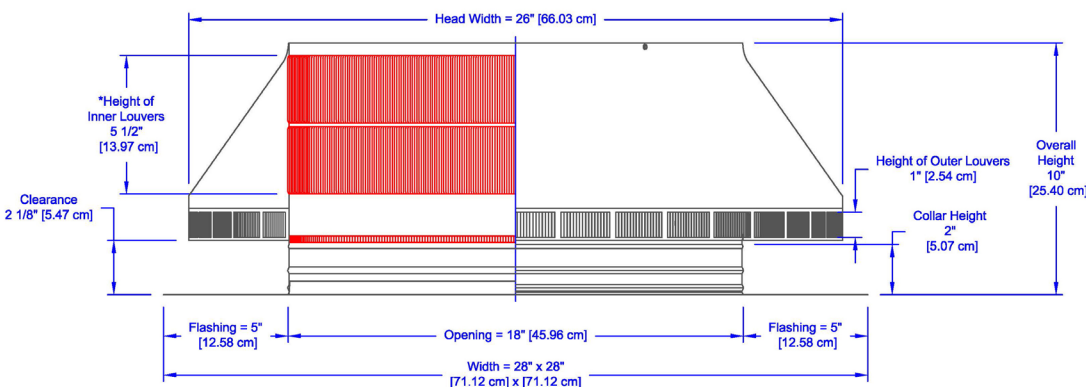


- Removes summer heat & winter moisture from the attic
- Stops rain, snow & unwanted pests
- Strong, corrosion-resistant aluminum
- Tested to withstand wind pressures exceeding 200 mph
- Available in powder coat colors
- UL Listed (20171107-R38772), Florida & Texas Approved (FL4763-R4)



Inside Louvers

Dimensions & Specifications 254 Sq. in. NFA



Pitch Capacity	
Min.: 3/12	Max.: 12/12
Net Free Vent Area	
254 sq. inches	1.76 sq. feet
Application per Sq. Foot	
529 (1/150)	1,058 (1/300)
Weight = 12 lbs	

* Louvers have 1/8" opening