



Active Ventilation Products, Inc.

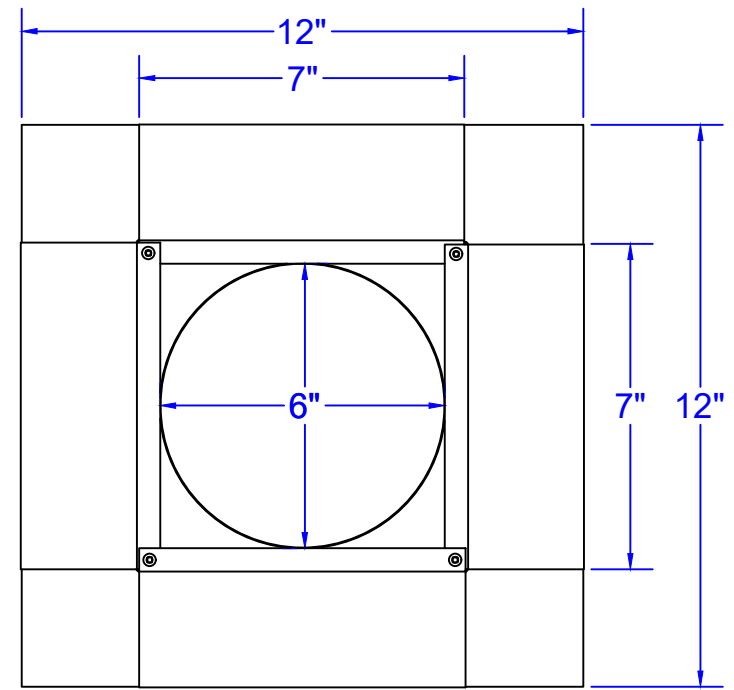
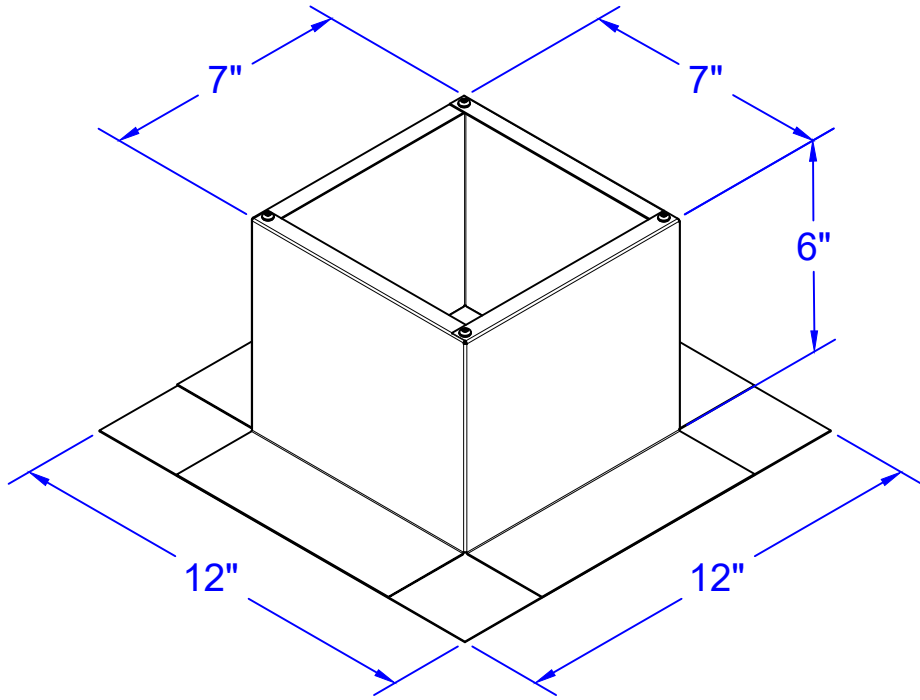
Website: roofvents.com

Email: sales@roofvents.com

Specification Sheet

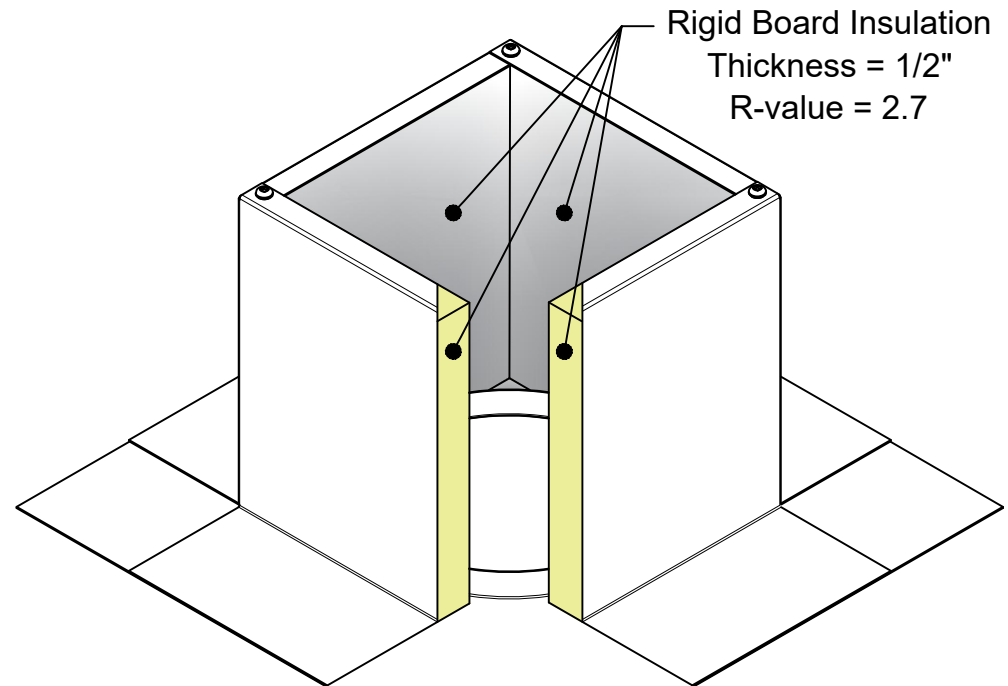
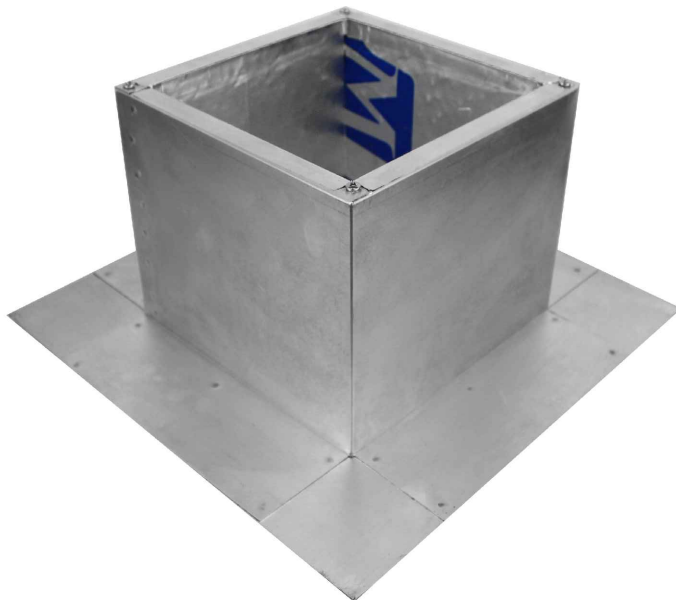
1/1/2023

Insulated Roof Curb Model: RC-4-H6-Ins ID: 6" OD: 7"



- Aluminum Alloy 3003-H14
- Thickness = 0.025" ± 0.005
- Tolerance = ± .25 (1/4")

Rigid Board Insulation
Thickness = 1/2"
R-value = 2.7



Model is Not to Scale