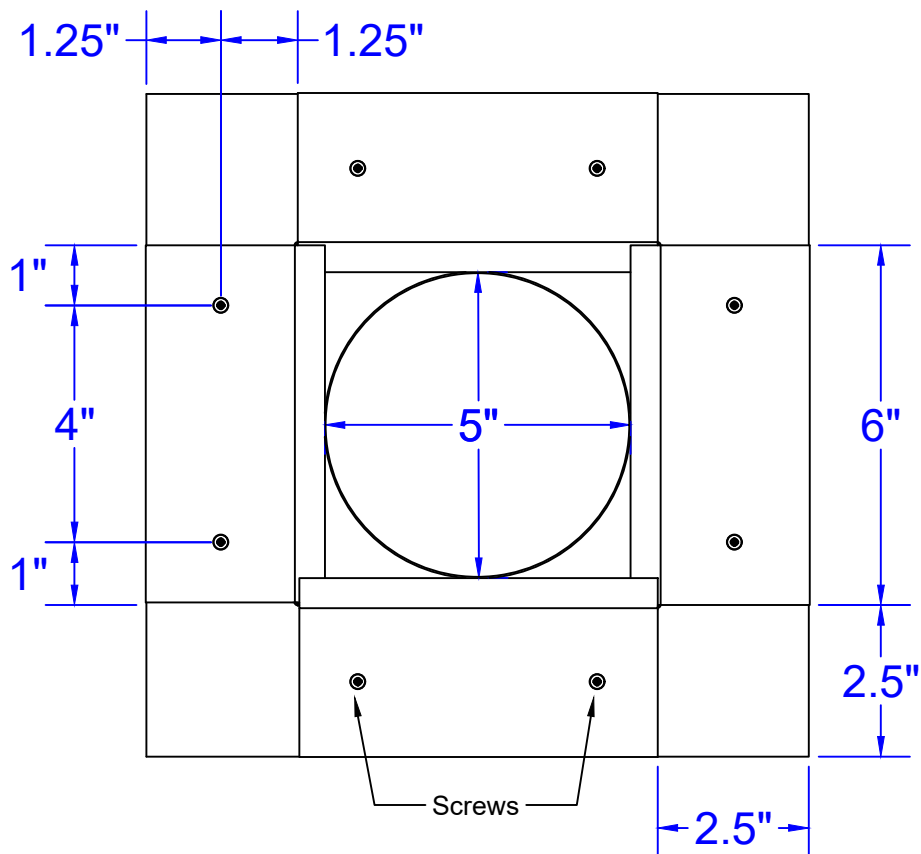
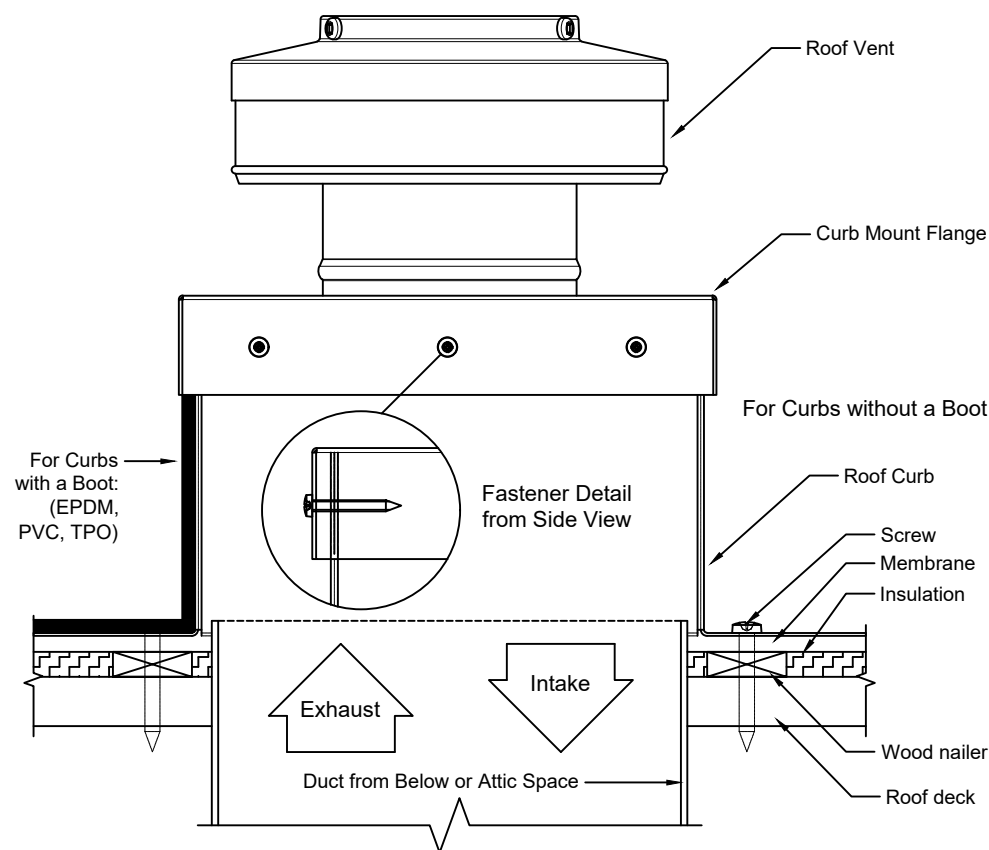


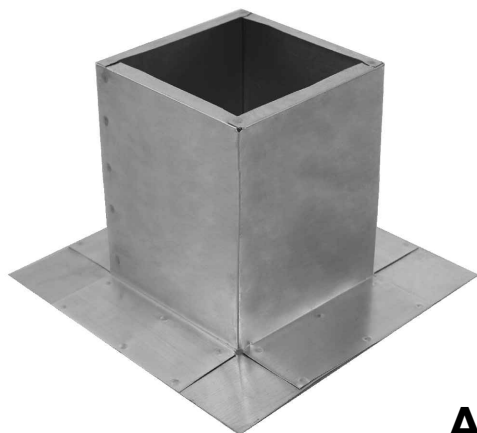
Screw Pattern (Symmetrical for all Sides)



Roof Curb Flashing Detail



- Aluminum Alloy 3003-H14
- Thickness = $0.025" \pm 0.005$
- Tolerance = $\pm .25$ ($\frac{1}{4}"$)



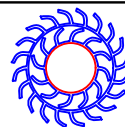
Angled View

Roof Curb Installation Instructions

1. Cut a round hole 5" in diameter in the roof deck.
2. Total number of screws needed for flange = 8
3. *Recommended installation screw: **Flat, Bugle or Wafer Head #10 x 1 1/2"** Sheet Metal Screw, Type A Point*
4. Flash roof curb onto deck according to specifications of the membrane manufacturer.
5. Screws not included.

Square Roof Curb Model: SRC-3-H8

Inside Diameter: 5", Outside Length & Width: 6", Height: 8"



Active Ventilation Products, Inc.

Website: roofvents.com

Email: sales@roofvents.com

11/7/2023