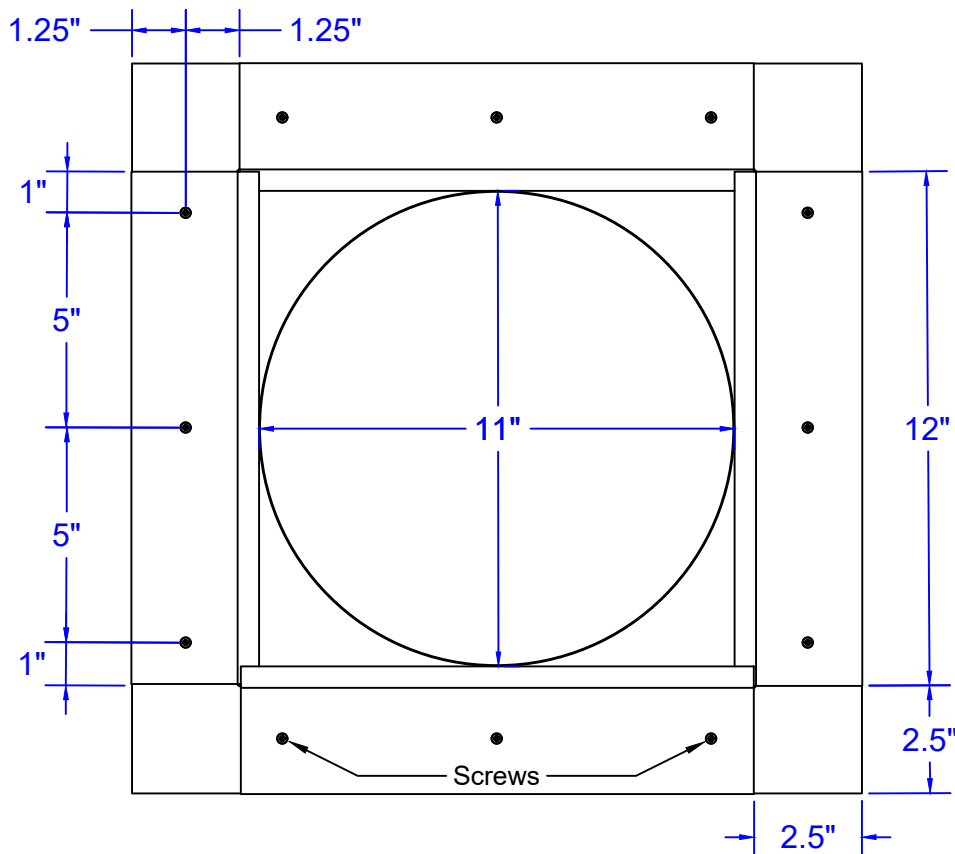
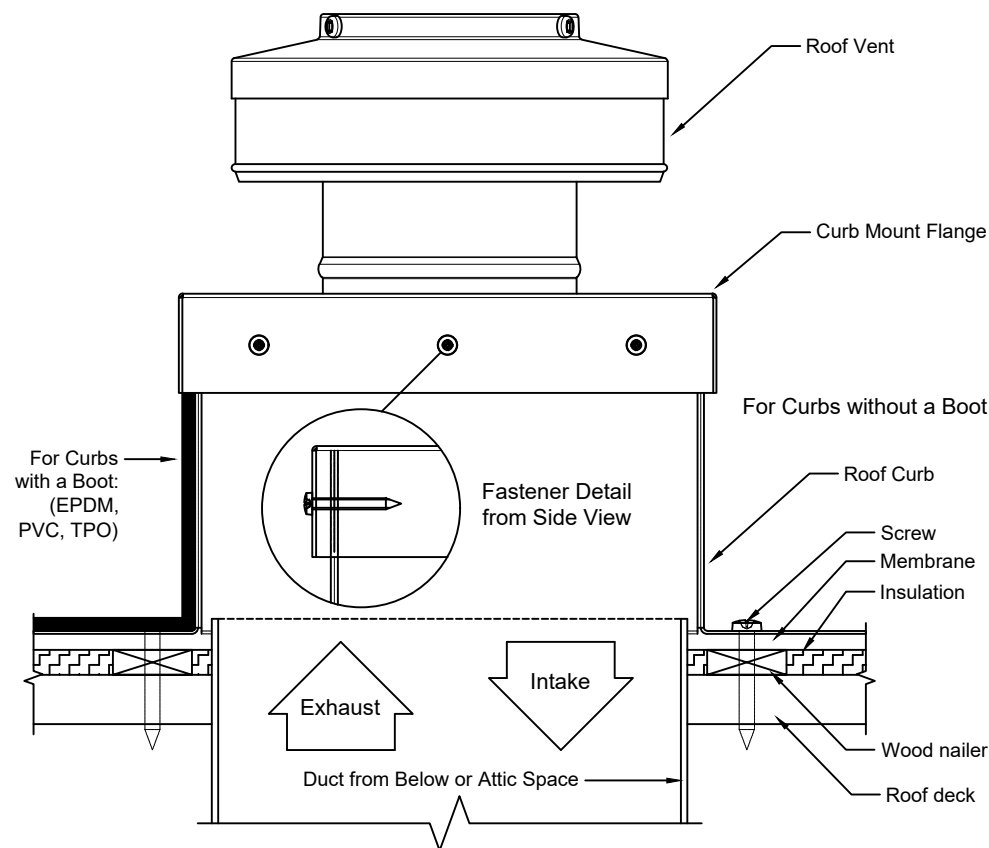


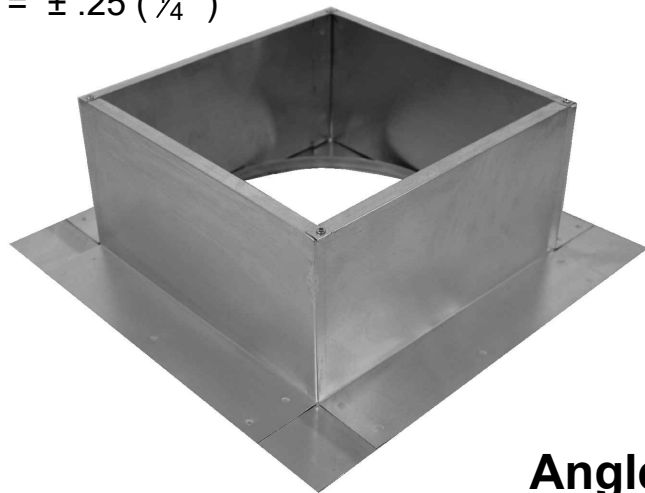
## Top View



## Roof Curb Flashing Detail



- Aluminum Alloy 3003-H14
- Thickness = 0.025"  $\pm$  0.005
- Tolerance =  $\pm$  .25 (  $\frac{1}{4}$  )



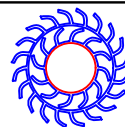
Angled View

## Roof Curb Installation Instructions

1. Cut a round hole 11" in diameter in the roof deck.
2. Total number of screws needed for flange = 12
3. *Recommended installation screw: **Flat, Bugle or Wafer Head #10 x 1 1/2"** Sheet Metal Screw, Type A Point*
4. Flash roof curb onto deck according to specifications of the membrane manufacturer.
5. Screws not included.

### Square Roof Curb Model: SRC-9-H8

Inside Opening: 11", Outside Length & Width: 12", Height: 8"



**Active Ventilation Products, Inc.**

Website: [roofvents.com](http://roofvents.com)

Email: [sales@roofvents.com](mailto:sales@roofvents.com)

11/9/2023