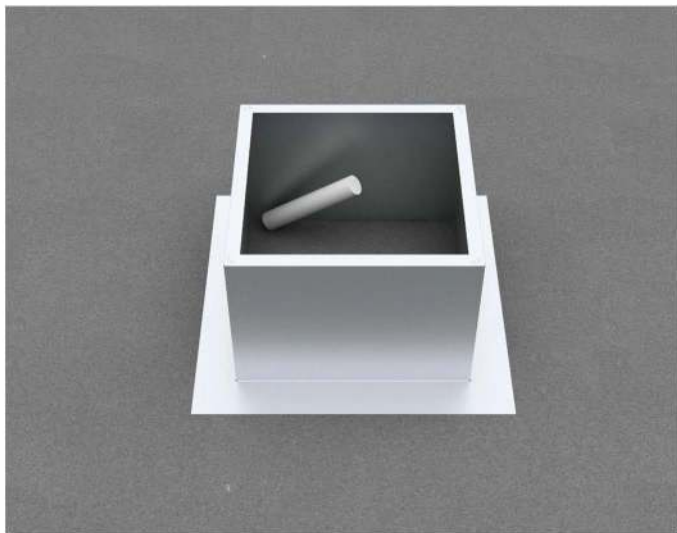


### Step 1:

Use the roof curb as your pattern to cut your square hole. With a marker or roof chalk trace the inside of the roof curb so that the section of the roof membrane is marked to cut.



### Step 2:

Cut the membrane with a razor blade or box cutter.



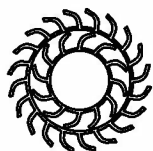
### Step 3:

With a saw cut the roof deck as shown below.



### Step 4:

Do not cut roof rafters.



## Active Ventilation Products, Inc.

311 First Street, Newburgh, NY 12550-4857

800-ROOF VENT (766-3836) Ph: 845-565-7770 Fax: 845-562-8963

Website: [roofvents.com](http://roofvents.com) Email: [sales@roofvents.com](mailto:sales@roofvents.com)

5777-1

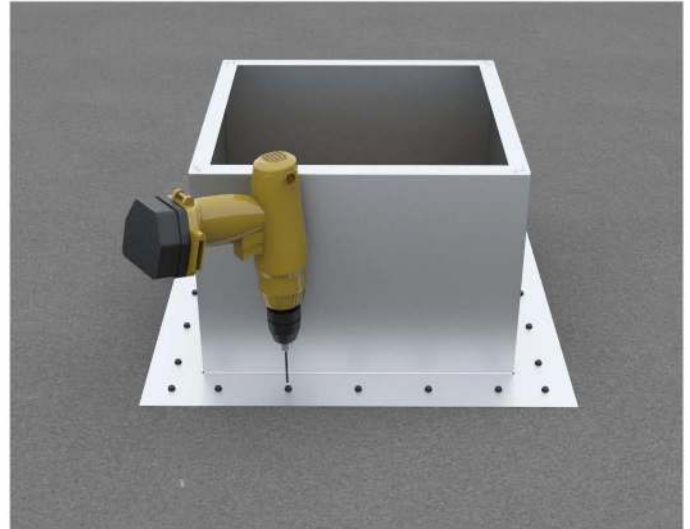
**Step 5:**

Now place roof curb over the square opening



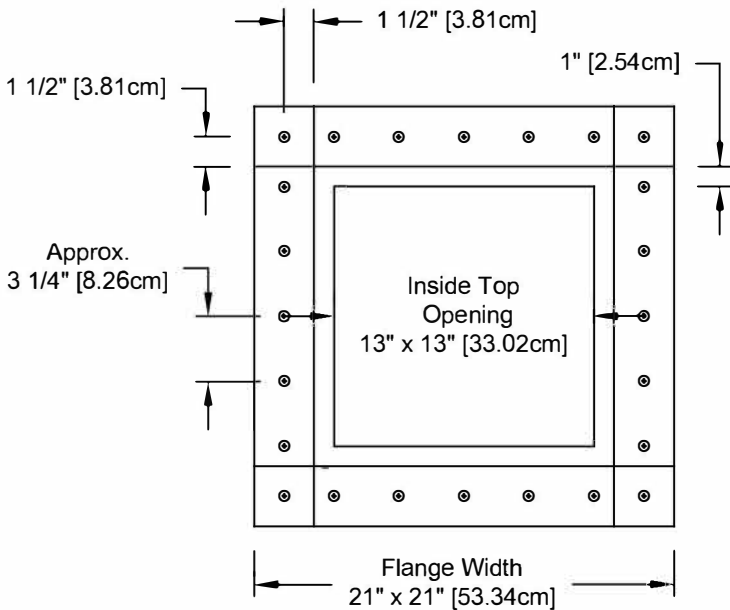
**Step 6:**

Attach the roof curb to the deck with the required #10 screw. Use step 7 for screw pattern.



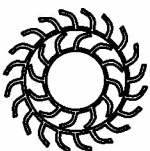
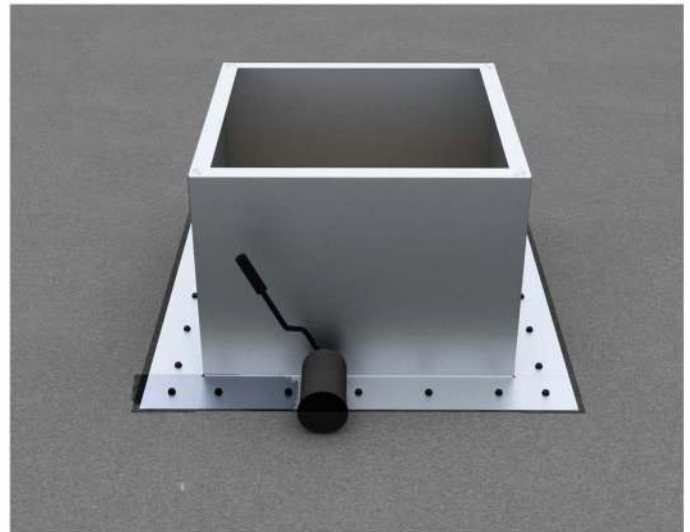
**Step 7:**

Pattern shown in diagram below. (tolerance :1/2")



**Step 8:**

Apply roofing adhesive on the flange make sure to cover all screws and the entire roof curb as well.



## Active Ventilation Products, Inc.

311 First Street, Newburgh, NY 12550-4857

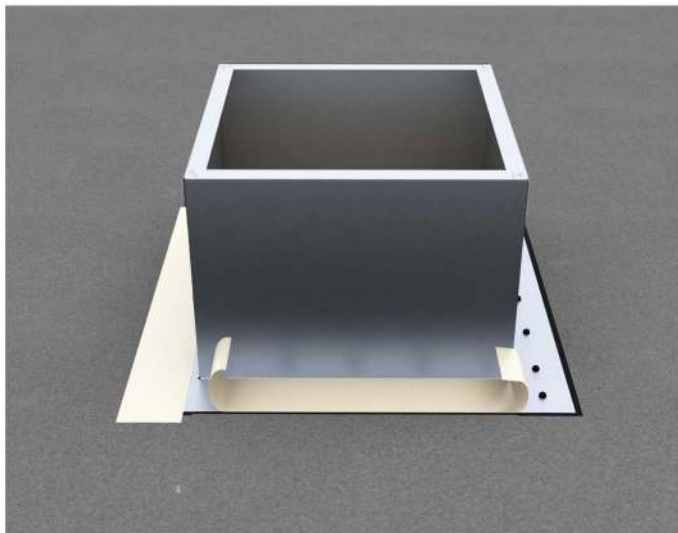
800-ROOF VENT (766-3836) Ph: 845-565-7770 Fax: 845-562-8963

Website: roofvents.com Email: sales@roofvents.com

5777-1

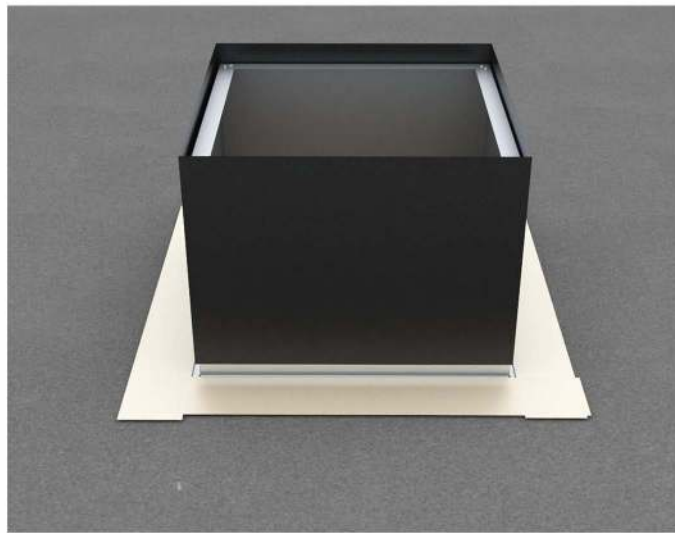
**Step 9:**

Apply EPDM Tape on the flange of the roof curb.



**Step 10:**

Apply Roofing Material to roof curb.

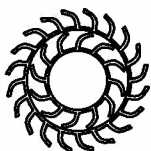
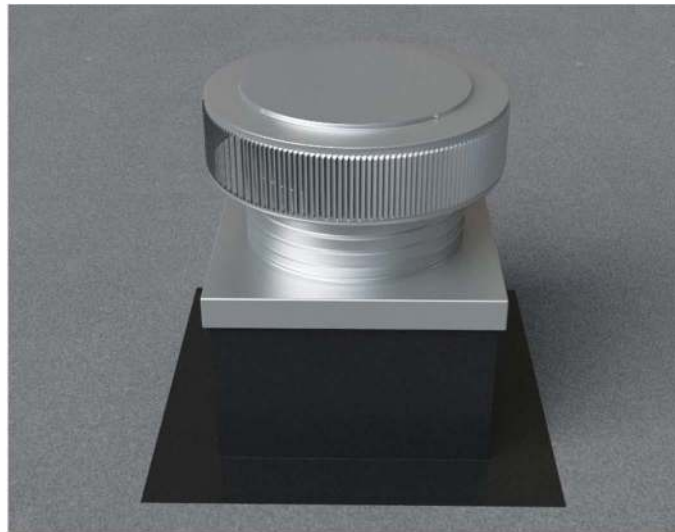


**Step 11:**

Apply Final strip over the EPDM and the flange.



Example of a roof vent installed onto the roof curb.



## Active Ventilation Products, Inc.

311 First Street, Newburgh, NY 12550-4857

800-ROOF VENT (766-3836) Ph: 845-565-7770 Fax: 845-562-8963

Website: [roofvents.com](http://roofvents.com) Email: [sales@roofvents.com](mailto:sales@roofvents.com)

5777-1