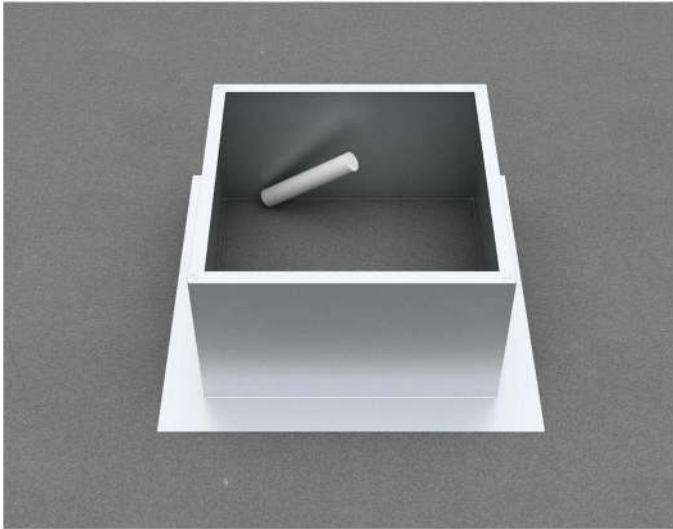


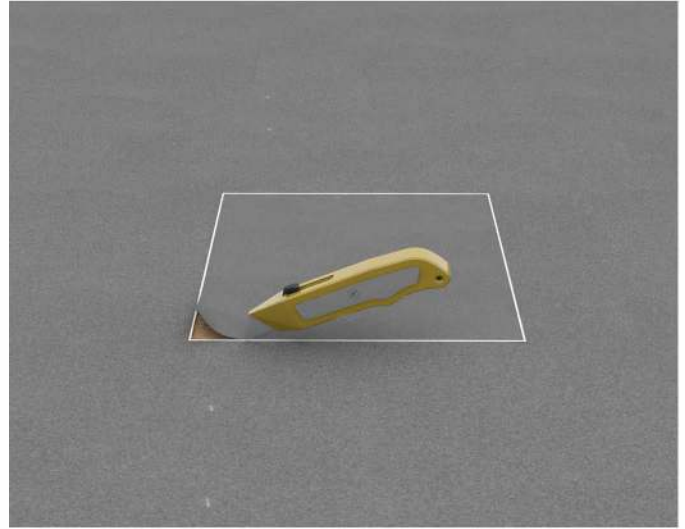
Step 1:

Use the roof curb as your pattern to cut your square hole. With a marker or roof chalk trace the inside of the roof curb so that the section of the roof membrane is marked to cut.



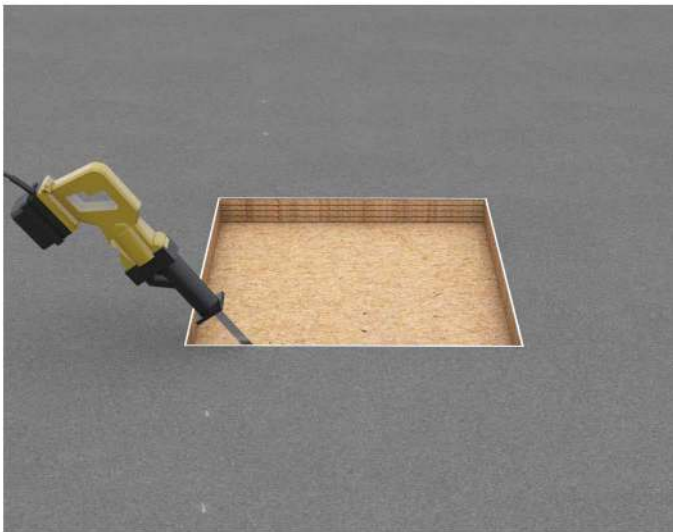
Step 2:

Cut the membrane with a razor blade or box cutter.



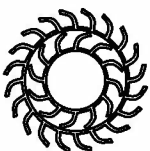
Step 3:

With a saw cut the roof deck as shown below.



Step 4:

Do not cut roof rafters.



Active Ventilation Products, Inc.

311 First Street, Newburgh, NY 12550-4857

800-ROOF VENT (766-3836) Ph: 845-565-7770 Fax: 845-562-8963

Website: roofvents.com Email: sales@roofvents.com

5777-1

Step 5:

Now place roof curb over the square opening



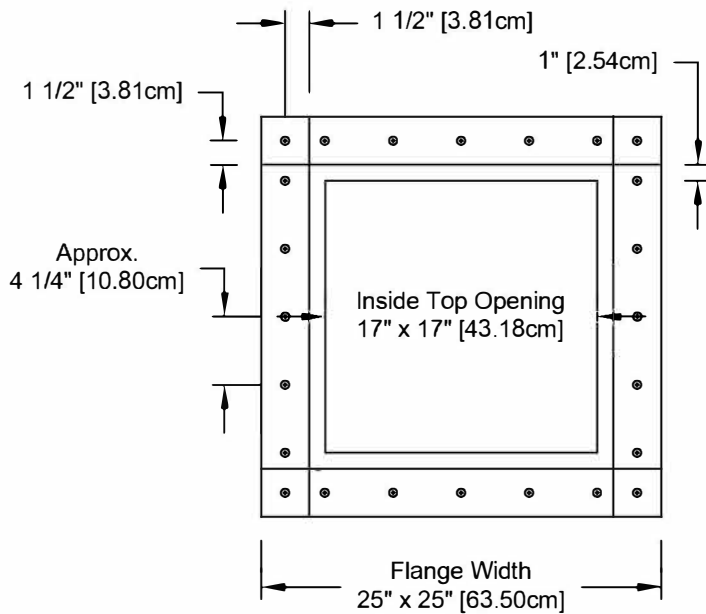
Step 6:

Attach the roof curb to the deck with the required #10 screw. Use step 7 for screw pattern.



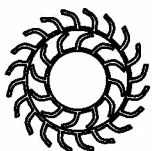
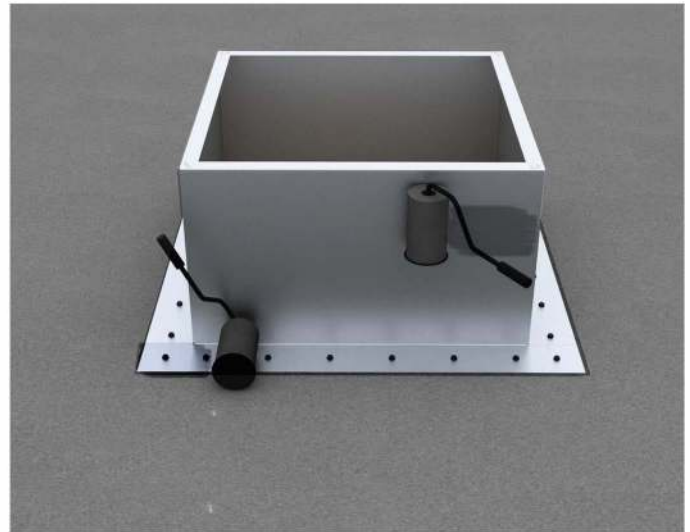
Step 7:

Pattern shown in diagram below. (tolerance : 1/2")



Step 8:

Apply roofing adhesive on the flange make sure to cover all screws and the entire roof curb as well.



Active Ventilation Products, Inc.

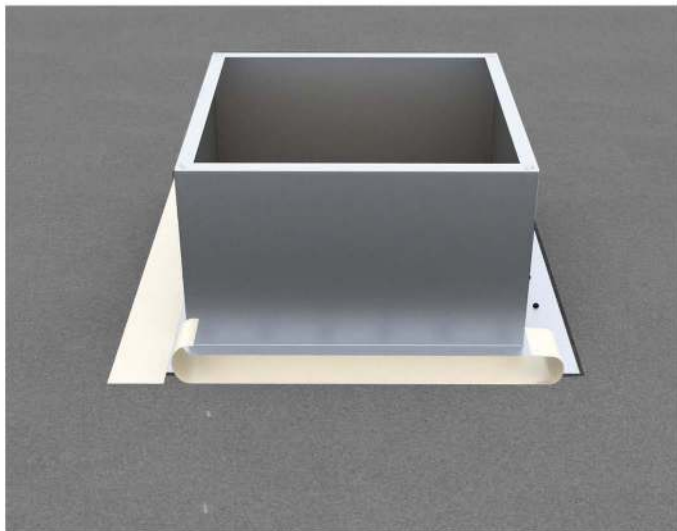
311 First Street, Newburgh, NY 12550-4857

800-ROOF VENT (766-3836) Ph: 845-565-7770 Fax: 845-562-8963

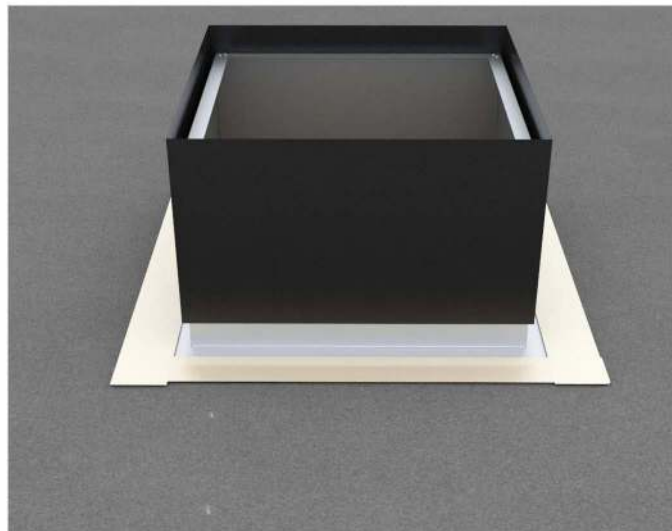
Website: roofvents.com Email: sales@roofvents.com

5777-1

Step 9:
Apply EPDM Tape on the flange of the roof curb.



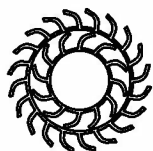
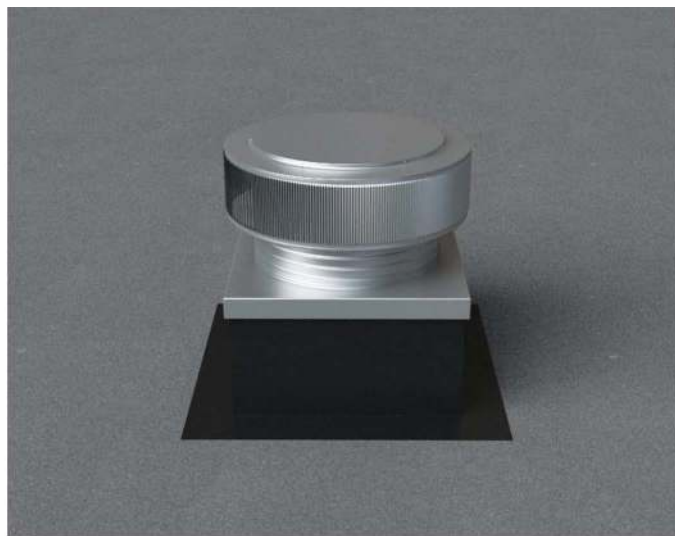
Step 10:
Apply Roofing Material to roof curb.



Step 11:
Apply Final strip over the EPDM and the flange.



Example of a roof vent installed onto the roof curb.



Active Ventilation Products, Inc.

311 First Street, Newburgh, NY 12550-4857

800-ROOF VENT (766-3836) Ph: 845-565-7770 Fax: 845-562-8963

Website: roofvents.com Email: sales@roofvents.com

5777-1