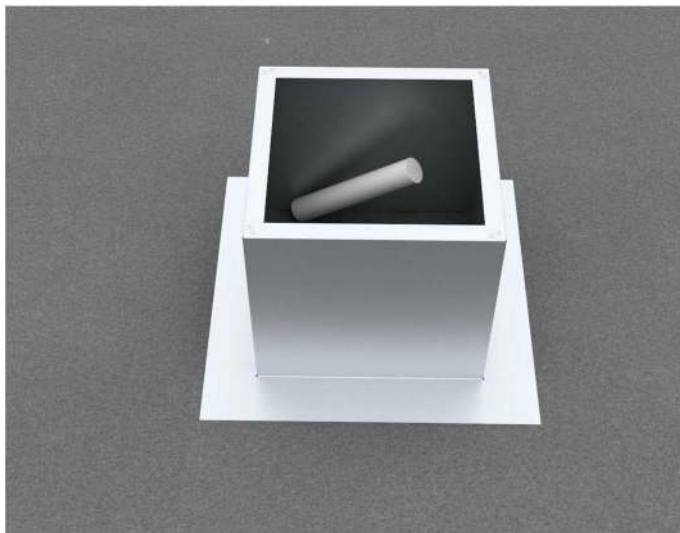


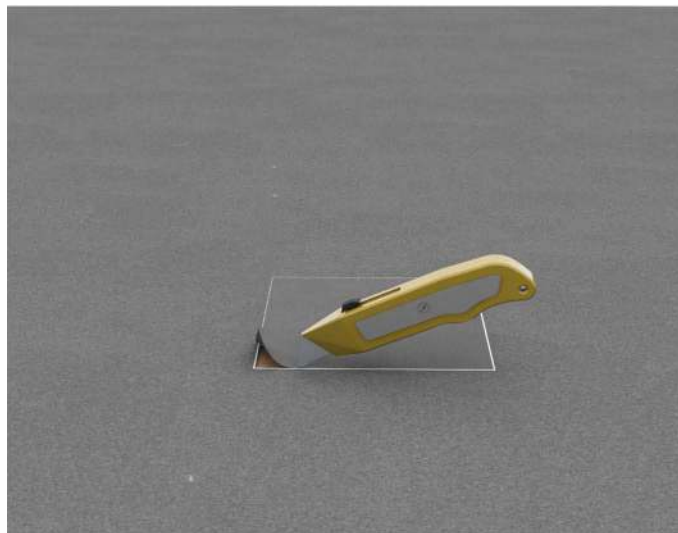
**Step 1:**

Use the roof curb as your pattern to cut your square hole. With a marker or roof chalk trace the inside of the roof curb so that the section of the roof membrane is marked to cut.



**Step 2:**

Cut the membrane with a razor blade or box cutter.



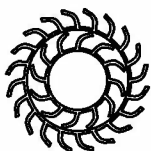
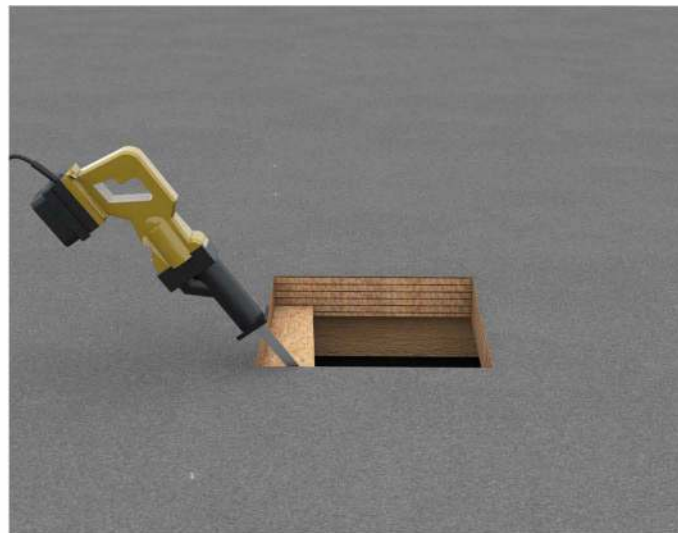
**Step 3:**

With a saw cut the roof deck as shown below.



**Step 4:**

Do not cut roof rafters.



## Active Ventilation Products, Inc.

311 First Street, Newburgh, NY 12550-4857

800-ROOF VENT (766-3836) Ph: 845-565-7770 Fax: 845-562-8963

Website: [roofvents.com](http://roofvents.com) Email: [sales@roofvents.com](mailto:sales@roofvents.com)

5777-1

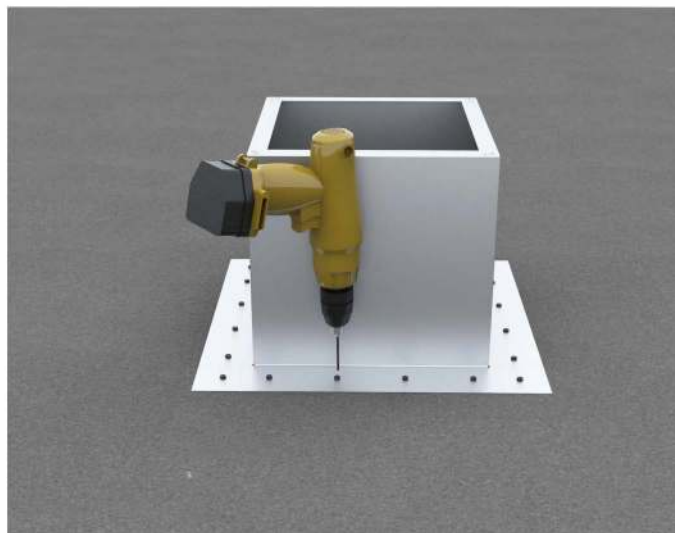
**Step 5:**

Now place roof curb over the square opening



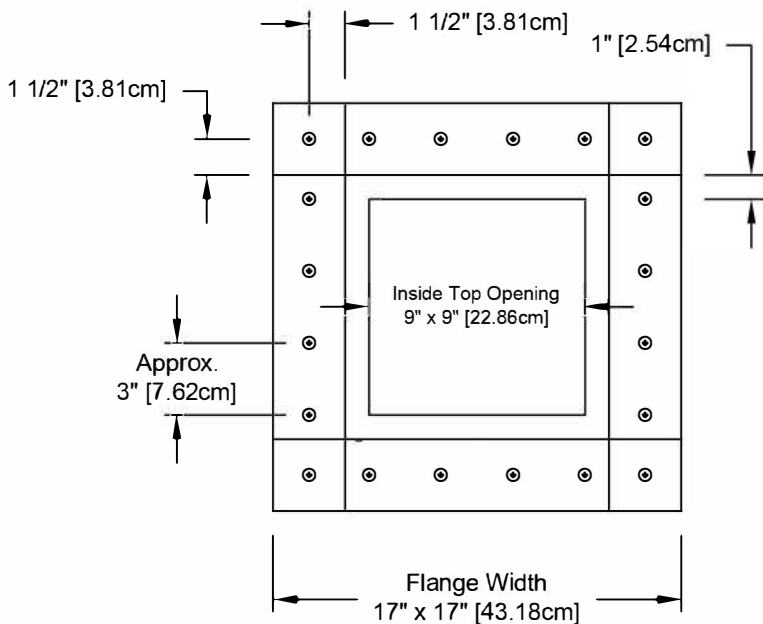
**Step 6:**

Attach the roof curb to the deck with the required #10 screw. Use step 7 for screw pattern.



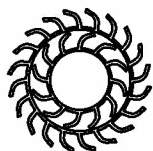
**Step 7:**

Pattern shown in diagram below. (tolerance :1/2")



**Step 8:**

Apply roofing adhesive on the flange make sure to cover all screws and the entire roof curb as well.



## Active Ventilation Products, Inc.

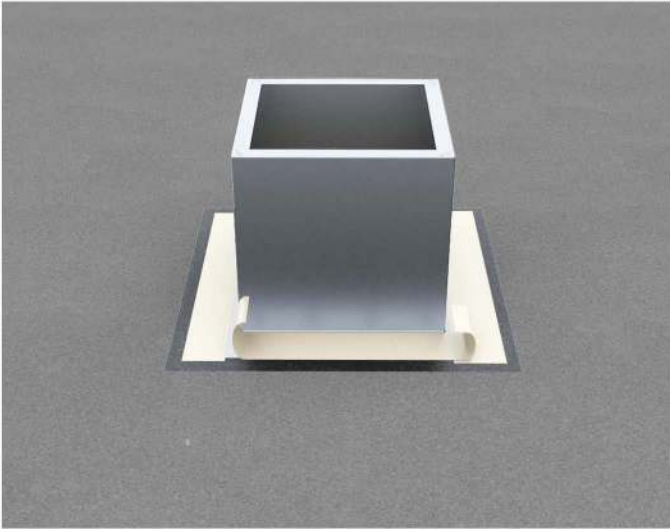
311 First Street, Newburgh, NY 12550-4857

800-ROOF VENT (766-3836) Ph: 845-565-7770 Fax: 845-562-8963

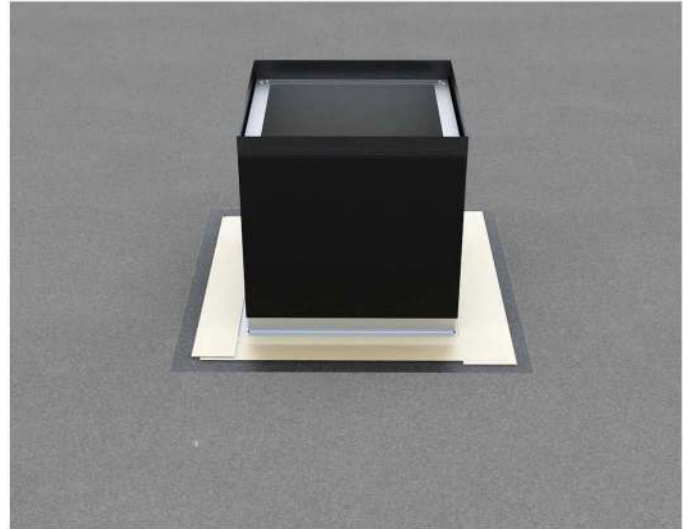
Website: [roofvents.com](http://roofvents.com) Email: [sales@roofvents.com](mailto:sales@roofvents.com)

5777-1

**Step 9:**  
Apply EPDM Tape on the flange of the roof curb.



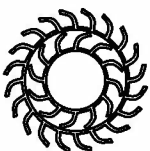
**Step 10:**  
Apply Roofing Material to roof curb.



**Step 11:**  
Apply Final strip over the EPDM and the flange.



Example of a roof vent installed onto the roof curb.



## Active Ventilation Products, Inc.

311 First Street, Newburgh, NY 12550-4857

800-ROOF VENT (766-3836) Ph: 845-565-7770 Fax: 845-562-8963

Website: [roofvents.com](http://roofvents.com) Email: [sales@roofvents.com](mailto:sales@roofvents.com)

5777-1