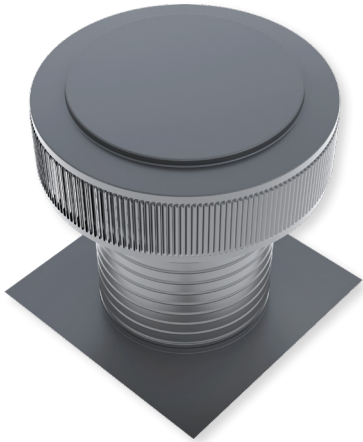




## Aura Gravity Roof Ventilator

Model Number: AV-14-C12 | 14" Diameter 12" Tall Collar



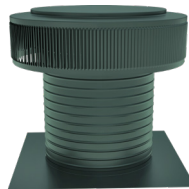
- Residential Gravity Ventilator removes hot air in the summer and moisture from the attic in the winter to provide ventilation for low slope or flat roofs
- Exhausts air like a roof turbine but with no moving parts
- Engineered to prevent rain, snow, insects and animals from entering
- Lowers attic temperature
- Suitable for low slope or flat roofs
- Constructed of durable rust-free aluminum
- UL Certified, Florida State & California Fire Code approved, Texas Department of Insurance; Tested to withstand wind speeds of 200+ mph



Brown-8028



Grey-7039



Green-6028



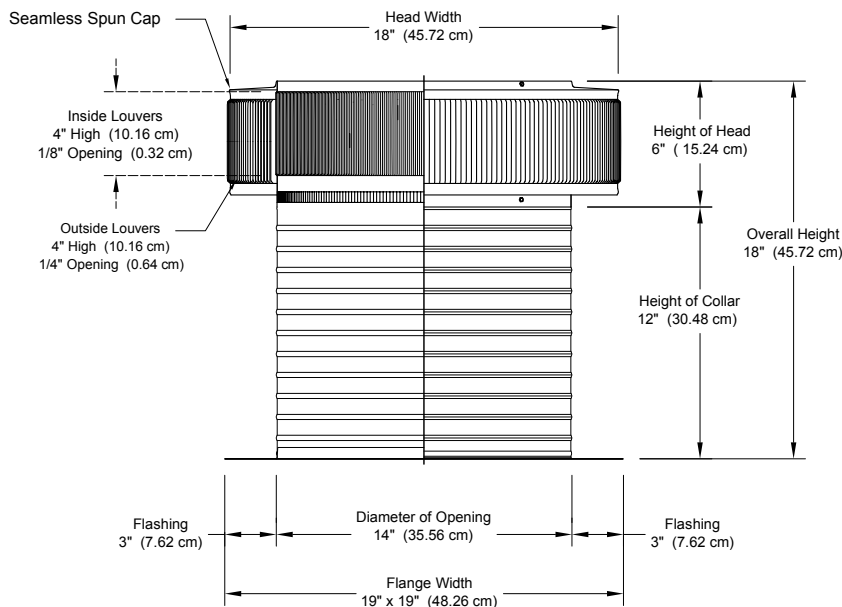
Black

*Additional colors available*



Inside Louvers

### Dimensions & Specifications 144 Sq. in. NFA



| Pitch Capacity                            |                      |                 |         |        |
|---|----------------------|-----------------|---------|--------|
| Min.                                      | Max. (Standard Vent) | Max. (Modified) |         |        |
| 0/12                                      | 6/12                 | 12/12           |         |        |
| Net Free Vent Area                        |                      |                 |         |        |
| (sq. inches)                              |                      | (sq. feet)      |         |        |
| 144                                       |                      | 1               |         |        |
| Application per Sq. Foot                  |                      |                 |         |        |
| (1/150)                                   |                      | (1/300)         |         |        |
| 300                                       |                      | 600             |         |        |
| Weight                                    |                      |                 |         |        |
| 5.2 lbs                                   |                      |                 |         |        |
| CFM Performance Testing (using wind only) |                      |                 |         |        |
| 4 mph                                     | 5.2 mph              | 7.4 mph         | 9.8 mph | 11 mph |
| 178                                       | 200                  | 280             | 315     | 360    |